



**GÖLZ®**

**Diamond Tools 2019**

[www.golzgroup.com](http://www.golzgroup.com)



<b>Diamond Saw Blades</b>	<b>Page</b>	<b>6-55</b>
Diamond Saw Blades for Angle Grinders	Page	6-15
Diamond Cutter for Angle Grinder	Page	16
Diamond Cup Grinders for Angle Grinders	Page	17
Diamond Blades for Masonry Saws	Page	18-25
Diamond Blades for Floor Saws	Page	26-37
Diamond Blades for Cut Off Saws	Page	38-49
Diamond Blades for Wall Saws	Page	50-53
Accessories	Page	54-55
<b>Grinding and Polishing Technology</b>	<b>Page</b>	<b>56-60</b>
<b>Dry Hollow Drills &amp; Diamond Drill Bits + Accessories</b>	<b>Page</b>	<b>61-85</b>
Diamond Drill Bits, dry	Page	63
Diamond Drill Bits, wet	Page	64-75
Diamond Drill Bits, wet, 3-hole-flange	Page	76-77
Diamond Drill Segments & Ringsegments	Page	79-81
Drill Bit Accessories	Page	82-85

Prices valid as of 15th April 2019.

All transactions are subject to our general terms and conditions.

© Copyright 2019 by Gölz GmbH Hellenthal.

### Materials



Marble, Natural and Cast Stone



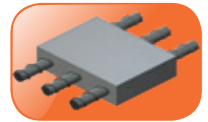
Bricks, Clinker, hard Clinker, Stone, medium hard Clinker, Brickwork



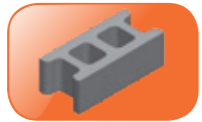
Poroton



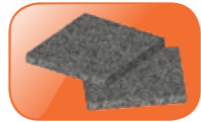
Tiles, Stoneware, hard Grounding



Reinforced Concrete



Pumice



Granite, thin Granite, Hard Stone



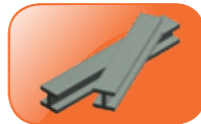
Wood



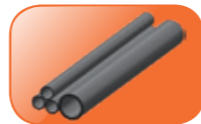
Asphalt, Lime Floor, Abrasive Material



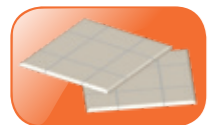
Concrete, general Purpose, Exposed Aggregate Concrete, Concrete with hard Components, Cured Concrete



Iron, Steel



Cast Iron



Ceramics

### Machines / Icons



Angle Grinder



Electric Cut Off Saw



Floor Saw



Grinding Machine



Wall Saw



Hand-Held Power Cut Off Saw



Electric Ring Saw



Tile/Bridge Saw



Stone Cutting Machine



Drilling Technic

### Our Color Code



Reinforces Concrete, Concrete



Concrete Universal, Bricks, Clinker, Stone



Asphalt, abrasive Material



Tiles, Ceramics



Granite, Natural and Cast Stone

### Special Features



In unserem Sortiment führen wir zahlreiche Diamanttrennscheiben, welche durch unsere Whisper-Technologie über ein schalldämpftes Stammbblatt verfügen und die Geräuschemission somit um ein Vielfaches verringern.

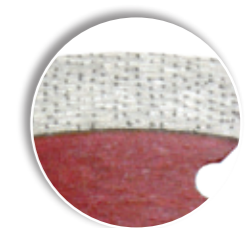


Laser-welded Diamond Blades and Diamond Drill Bits are durable and much more resistant.



Ideal Performance due to special Diamond Technology

- Consistant Cutting Performance
- Ideal Life
- Constant Cutting Speed



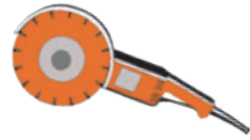
# Diamond Blades for Angle Grinder

## Use recommendation

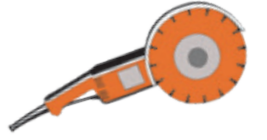


	DF 70	DF 70 LR	DS 22	DS 36	DS 42	DS 30	DTS 30	DTS 40	GX-UT2	LCP 1	LGB 30	LM 50 T	LSP 3	LT 30	LU 40	MX1/ Whisper MX1	SG 15	SG 25	SLF 10	Stardust	Stardust Steel	UG 25
General purpose						■			■	■				■	■							
Basalt										□	■		■								□	
Concrete			■	■	■	■	■	■	■	■	□		■	■	■						■	
Abrasive concrete									□			■										
Reinforced concrete							□	□	■	■			■	□	■	■					□	
Concrete products			■	■	■					■	□							□				
Concrete and hard components							□	□							■	■						
Pumice							□	□														
Roofing tile									□	□				□	■							
Lime floor															□							
Fireproof stone										■	■		■									
Tiles																	■	■	■			
Granite				■			□	■	■		■		■	□	□	■	■	■	■	□		■
Cast iron											□		■								■	
Wood																					■	
Limestone										■		■				■						
Sand-lime brick highly compressed							□															
Ceramics									■								■	■	■			
Hard clincers / bricks						■	■	■	□	■			■		□	■						
Medium hard clincers / bricks						□	■	■	■	■			□	■	■	■						
Soft clincers / bricks							□	□	□	□					■	■						
Marble																			■			■
Brickwork	■	■										■									■	
Poroton						■																
Porphy										□	■		□	□		□	■	■				
PVC																					■	
Quartzite										□			□									
Sandstone						□			■	■												
Fire clay										■	■		■									
Slate														□	□							
Steel																					■	■
Stoneware							■	■							□		■	■	■			
Exposed aggregate concrete						□			■	■				■	■	■						
Page	16	16	17	17	17	10	10	11	11	12	14	10	14	11	12	13	8	8	9	15	15	9

■ well suitable □ limited suitable



## Tiles - Stoneware - Ceramics Granite - Natural & Cast Stone



### SG15 Turbo diamond blade - sintered

- Extremely thin
- very fast cutting
- steel core is strengthened in flange area
- Tiles, ceramics, granites, stone

Ø (mm)	Bore (mm)	Segments (mm)		Order number
		W	H	
115	22,23	1,4	10,0	SG15 115
125	22,23	1,4	10,0	SG15 125
230	22,23	1,6	10,0	SG15 230



### SG25 Turbo diamond blade - sintered

- Extremely thin
- very fast cutting
- clean cutting edge
- Tiles, ceramics, granites, stone

Ø (mm)	Bore (mm)	Segments (mm)		Order number
		W	H	
115	22,23	1,4	10,0	SG25 115
125	22,23	1,4	10,0	SG25 125
230	22,23	1,6	10,0	SG25 230

### SLF10 Premium quality - sintered

- Closed cutting rim for clean and easy cutting
- Tiles, ceramics, fine matter, granite, marble

Ø (mm)	Bore (mm)	Segments (mm)		Order number
		W	H	
115	22,23	1,4	10,0	0497 308 0115
125	22,23	1,4	10,0	0497 308 0125
180	22,23	1,8	10,0	0497 308 0180
230	22,23	2,0	10,0	0497 308 0230

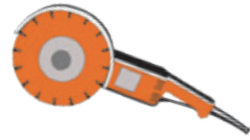


### UG25 Turbo diamond blade - sintered

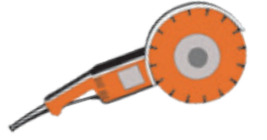
- Blade with closed cutting rim and turbo segment for natural stone
- Steel core protection
- Granite, Marble

Ø (mm)	Bore (mm)	Segments (mm)		Order number
		W	H	
125	22,23	2,2	10,0	UG25 125
230	22,23	2,6	10,0	UG25 230





## For General Purpose on Electric Angle Grinders



### LM50-T Sintered

- Closed cutting rim
- Turbo segment undercut protection
- Mortar, concrete, bricks, clinker

Ø (mm)	Bore (mm)	Segments (mm)		Order number
		W	H	
115	22,23	2,2	9,0	0497 351 0115
125	22,23	2,2	9,0	0497 351 0125
150	22,23	2,5	9,0	0497 351 0150
180	22,23	2,5	9,0	0497 351 0180
230	22,23	2,8	9,0	0497 351 0230



### DS30 Universal - Sintered

- Blocksegment 10 mm high
- best speed to life rate
- Concrete, bricks, clinkers, general purpose

Ø (mm)	Bore (mm)	Segments (mm)				Order number
		L	W	H	Qty	
115	22,23	43	1,6	10,0	8	DS30 115
125	22,23	42	1,6	10,0	9	DS30 125
150	22,23	50	2,0	10,0	9	DS30 150
180	22,23	42	2,0	10,0	13	DS30 180
230	22,23	43	2,3	10,0	16	DS30 230



### DTS30 Turbo - Sintered

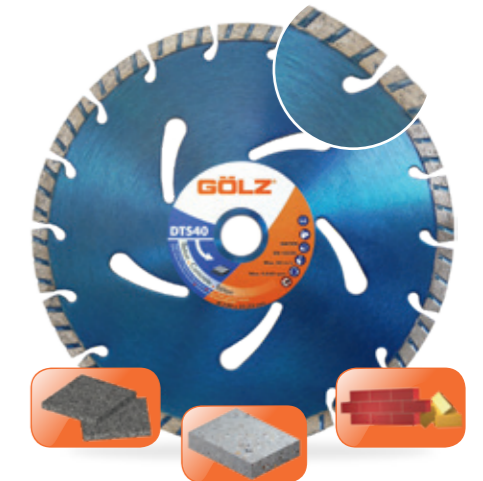
- 10 mm Segment height
- Turbo segment for optimised cooling
- Concrete, bricks, hard clinkers, stone

Ø (mm)	Bore (mm)	Segments (mm)				Order number
		L	W	H	Qty	
115	22,23		2,0	10,0		DTS30 115
125	22,23		2,0	10,0		DTS30 125
150	22,23		2,3	10,0		DTS30 150
230	22,23		2,8	10,0		DTS30 230

### DTS40 Universal - Sintered

- Schnitffreudige Diamanttrennscheibe
- Turbosegment with cooling slots
- Concrete, bricks, hard clinkers, stone

Ø (mm)	Bore (mm)	Segments (mm)				Order number
		L	W	H	Qty	
115	22,23	37,0	2,2	8,0	8	DTS40 115
125	22,23	36,0	2,2	8,0	9	DTS40 125
150	22,23	32,0	2,4	8,0	12	DTS40 150
180	22,23	35,0	2,4	8,0	14	DTS40 180
230	22,23	35,0	2,6	8,0	18	DTS40 230



### GX-U12 X-Series - sintered

**GALAXIS**  
TECHNOLOGY

- 12 mm Segment height
- Diamond blade with precise diamond arrangement
- Concrete, exposed aggregate concrete, bricks, clinker, general purpose

Ø (mm)	Bore (mm)	Segments (mm)				Order number
		L	W	H	Qty	
115	22,23	32,0	2,0	12,0	8	GX-U12 115
125	22,23	32,0	2,2	12,0	9	GX-U12 125
230	22,23	38,0	2,6	12,0	12	GX-U12 230



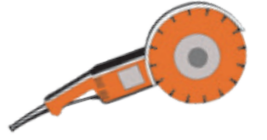
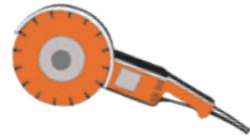
### LT30 Laser-welded

**LASER** \*

- 10 mm Segmenthöhe
- TURBO Segmentation for optimized cooling
- Concrete, reinforced concrete, bricks, middle hard clinkers, general purpose

Ø (mm)	Bore (mm)	Segments (mm)				Order number
		L	W	H	Qty	
115	22,23	32,0	2,2	10,0	9	0497 835 0115
125	22,23	32,0	2,2	10,0	10	0497 835 0125
150	22,23	32,0	2,2	10,0	12	0497 835 0150
180	22,23	32,0	2,4	10,0	14	0497 835 0180
230	22,23	38,0	2,6	10,0	16	0497 835 0230





## For General Purpose on Electric Angle Grinders



### LU 40 Concrete Premium - laser-welded **LASER**

- 10 mm Segment height
- Very efficient with good life
- Concrete, reinforced concrete, bricks, clinkers, exposed aggregate concrete, stones, general purpose

Ø (mm)	Bore (mm)	Segments (mm)			Qty	Order number
		L	W	H		
115	22,23	30,0	2,2	10,0	9	0497 364 0115
125	22,23	30,0	2,2	10,0	10	0497 364 0125
150	22,23	32,0	2,2	10,0	12	0497 364 0150
180	22,23	33,0	2,2	10,0	14	0497 364 0180
230	22,23	38,0	2,6	10,0	16	0497 364 0230



### LCP1 Concrete Premium - laser-welded **LASER**

- 10 mm Segment height
- Concrete, exposed aggregate concrete, hard bricks, clinker, material with hard components

Ø (mm)	Bore (mm)	Segments (mm)			Qty	Order number
		L	W	H		
115	22,23	31,0	2,2	10,0	9	0497 811 0115
125	22,23	31,0	2,2	10,0	10	0497 811 0125
150	22,23	32,0	2,4	10,0	12	0497 811 0150
180	22,23	33,0	2,4	10,0	14	0497 811 0180
230	22,23	38,0	2,4	10,0	16	0497 811 0230



### RX1 Allround - laser-welded **LASER**

- 14 mm Turbosegment
- General purpose, concrete, bricks, exposed aggregate concrete, stone and granite

Ø (mm)	Bore (mm)	Segments (mm)			Qty	Order number
		L	W	H		
115	22,23	31,0	2,4	14,0	8	RX1 115
125	22,23	35,0	2,4	14,0	8	RX1 125
150	22,23	35,0	2,6	14,0	10	RX1 150
180	22,23	37,0	2,8	14,0	12	RX1 180
230	22,23	37,0	3,0	14,0	16	RX1 230



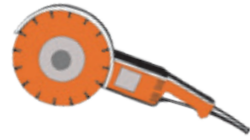
### MX1 & Whisper MX1 3-Step-Segment **LASER**

- 14 mm Segment height
- laser-welded
- Granite, clinkers, concrete, reinforced concrete, exposed aggregate concrete, bricks
- Silent steel core (Whisper MX1) for quiet cutting

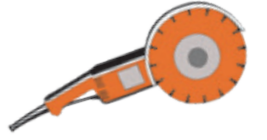
MX1						
Ø (mm)	Bore (mm)	Segments (mm)			Qty	Order number
		L	W	H		
115	22,23	31,0	2,8	14,0	8	MX1115
125	22,23	35,5	2,8	14,0	8	MX1125
230	22,23	37,0	3,4	14,0	16	MX1230

Whisper MX1 (with Silent Steel Core)						
Ø (mm)	Bore (mm)	Segments (mm)			Qty	Order number
		L	W	H		
230	22,23	37,0	3,4	14,0	16	WMX1230





**Top Quality Diamond Blades!**  
**Less heating - no cooling breaks -**  
**quick cutting!**



## LSP3 Granite Premium - laser-welded LASER\*

- 10 mm Highspeed-Segment
- Granite, hard stone, concrete with hard components, reinforced concrete, ductile iron pipes, steel

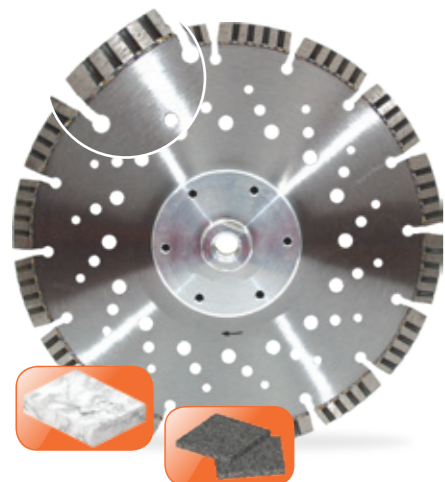
Ø (mm)	Bore (mm)	Segments (mm)				Order number
		L	W	H	Qty	
115	22,23	31,0	2,4	10,0	9	0497 813 0115
125	22,23	31,0	2,4	10,0	10	0497 813 0125
150	22,23	32,0	2,4	10,0	12	0497 813 0150
180	22,23	33,0	2,8	10,0	14	0497 813 0180
230	22,23	38,0	2,8	10,0	16	0497 813 0230



## LGB30 Premium diamond blade LASER\*

- Laser-welded
- 10 mm Turbosegment for optimised cooling
- Extremely hard granites

Ø (mm)	Bore (mm)	Segments (mm)				Order number
		L	W	H	Qty	
125	22,23	32,0	2,2	10,0	10	LGB30 125
230	22,23	38,0	2,6	10,0	16	LGB30 230



## LGB30 With Flange - Premium diamond blade LASER\*

- Laser-welded
- 10 mm Turbosegment for optimised cooling
- Extremely hard granites

Ø (mm)	Flansch/Bore	Segments (mm)				Bestellnr.
		L	W	H	Qty	
125	M14-Ø44/K32x4	31,0	2,4	10,0	10	LGB30 126
230	M14-Ø75/TK64x6	38,0	2,8	10,0	16	LGB30 231

## Alu-Flange

- Aluminium flange for flush cutting for diamond blade Ø 230 mm

Typ	Connection		Order number
Flansch Ø 80 mm	M 14	64 (6 x M5)	0296 000 0113
Flansch Ø 98 mm	22,2	84 (8 x M5)	0296 000 0115
Flansch Ø 49 mm	M 14	37 (4 x M5)	0296 000 0118
Imbusschraube		M5	0296 000 0114



## Stardust Universal Highspeed

- Superior cutting speed in nearly all materials
- No blade change needed
- Concrete, steel, stone, cast iron, PVC, wood

Ø (mm)	Bore (mm)	Segments (mm)		Order number
		W	H	
115	22,23	2,8	3,0	0396 802 0115
125	22,23	2,8	3,0	0396 802 0125
230	22,23	3,1	3,0	0396 802 0230



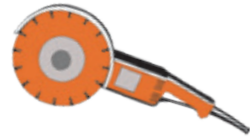
## Stardust Steel Steel Highspeed

- Superior cutting speed in steel
- No cutting problems with slow and polished tools
- Steel

Ø (mm)	Bore (mm)	Segments (mm)		Order number
		W	H	
230	22,23	3,7	3,0	0497 804 0230







## Diamond Raking Blades for mill-cutting



### DF70 Diamond raking blade - standard

- Brickwork, plaster

Ø (mm)	Bore (mm)	Segments (mm)			Qty	Order number
		L	W	H		
125	22,23	32,0	6,4	6+1	10	0296 367 6125



### DF70LR Diamond raking blade

- Offset segments and TCT protection segments
- Undercut protection segments
- Brickwork, plaster

Ø (mm)	Bore (mm)	Segments (mm)			Qty	Order number
		L	W	H		
125	22,23	34,0	5 (10)	7,0	10+5	0296 367 6125LR



## Für Trockenschleifarbeiten in Beton und Naturstein

### DS36 TURBO cup grinder - concrete and hard stone

- Dust extraction system possible
- Natural and cast stone, granite, hard surfaces

Ø (mm)	Bore (mm)	Segments (mm)		Order number
		W	H	
125	22,23	5,0	7,0	0497 336 0125
150	22,23	5,0	7,0	0497 336 0150
180	22,23	5,0	7,0	0497 336 0180



### DS22 Diamond cup grinder - Standard

- Double Segment row
- Concrete general purpose

Ø (mm)	Bore (mm)	Segments (mm)				Order number
		L	W	H	Qty	
125	22,23	25/32	5,0	7,5	20	DS22 125
180	22,23	28/35	5,5	8,0	24	DS22 180



### DS42 Diamond cup grinder - Premium

- Double Segment row
- Best life and grinding performance
- Concrete, medium hard surfaces, general purpose

Ø (mm)	Bore (mm)	Segments (mm)				Order number
		L	W	H	Qty	
105	22,23	30	5,0	8,0	16	0497 342 0105
125	22,23	25/32	5,0	7,5	20	0497 342 0125
180	22,23	28/38	5,5	8,0	24	0497 342 0180



## Diamond Blades for Masonry Saws





## Use recommendation

	BS 30	CT 30	GN25	GN30	GN30N	Whisper RX1	RX1S	SG 35	SLF 10	SLF 20
General purpose						■	■	□		
Asphalt						□	□			
Basalt								■		
Concrete		■				■	■	■		
Reinforced concrete		□				■		□		
Concrete products		■								
Pumice	■									
Fireproof stone			■	■	■			□		
Tiles									■	■
Aerated concrete	■									
Granite			■	■	■	■	■	■	■	■
Limestone	■									
Sand-lime brick highly compressed						■	■			
Ceramics									■	■
Hard clincers / bricks						■	■			
Medium hard clincers / bricks						■	■	■		
Soft clincers / bricks	■					■	■			
Marble						■	■		■	■
Poroton	■									
Porphyr			■	■	■			■		
Quartzite								■		
Sandstone	■		■	□	□	■	■			
Fire clay			■	■	■			□		
Stoneware									■	■
Exposed aggregate concrete		■				■	■	■		
Page	25	25	22	22	22	23	24	24	21	21

■ well suitable □ limited suitable

## Diamanttrennscheiben mit geschlossenem Schneidrand Für Fliesentrennmaschinen und Brückensägen



### SLF10 Premium quality - sintered

- Highspeed Diamond Blade for professional use on tile saws
- Tiles, ceramics, fine matter, granite, marble

Ø (mm)	Bore (mm)	Segments (mm)		Order number
		W	H	
180	25,4	1,8	10,0	0497 308 0181
200	25,4	1,8	10,0	0497 308 0201
250	25,4	2,0	10,0	0497 308 0251
300	30/25,4	2,2	10,0	0497 308 0300
300	25,4	2,2	10,0	0497 308 0301
350	30/25,4	2,2	10,0	0497 308 0350
350	25,4	2,2	10,0	0497 308 0351



### SLF20 Premium plus quality - silver brazed

- Highspeed Diamond Blade for professional use on bridge saws
- Tiles, ceramics, fine matter, granite, marble
- High quality Diamond Blade with Cobalt-Bronze-Bond

Ø (mm)	Bore (mm)	Segments (mm)		Order number
		W	H	
300	30,0/25,4	2,2	10,0	0497 307 0300
300	25,4	2,2	10,0	0497 307 0301
350	30,0/25,4	2,4	10,0	0497 307 0350
350	25,4	2,4	10,0	0497 307 0351





## For Bridge Saws



### GN25 Granite standard - laser-welded **LASER**\*

- Diamond Blade with soft and easy cutting bond
- For bridge saws up to 5 kW
- Granite, hard stone

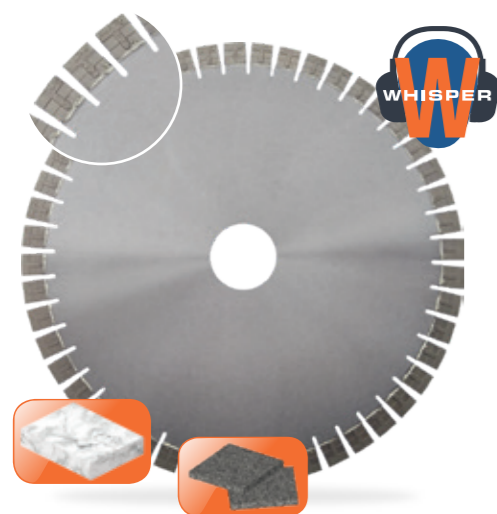
Ø (mm)	Bore (mm)	Segments (mm)			Qty	Order number
		L	W	H		
350	30,0/25,4	40,0	3,2	10,0	24	GN25 350
400	30,0/25,4	40,0	3,6	10,0	28	GN25 400



### GN30 Granite Premium - silver brazed

- Diamond blade with short segments for fast cut
- Silent-steel-core for silent working
- For bridge saws up to 5 kW
- Granite, hard stone

Ø (mm)	Bore (mm)	Segments (mm)			Qty	Order number
		L	W	H		
300	25,4	20,0	2,8	10,0	36	GN30 300
350	25,4	20,0	3,2	10,0	42	GN30 350
400	25,4	20,0	3,6	10,0	48	GN30 400
600	60,0	20,0	5,0	10,0	74	GN30 600



### GN30N Granit Premium Plus - silver brazed

- Professional Diamond blade with 3 layer design and 20 mm Segments
- Silent-steel-core for silent working
- For bridge saws up to 10 kW
- Granite, hard stone

Ø (mm)	Bore (mm)	Segments (mm)			Qty	Order number
		L	W	H		
400	60,0	20,0	3,8	20,0	48	GN30N 400
450	60,0	20,0	4,5	20,0	56	GN30N 450
500	60,0	20,0	4,5	20,0	60	GN30N 500
600	60,0	20,0	5,0	20,0	74	GN30N 600



## Concrete and general purpose The silent version for less cutting noise!



### Whisper RX1 Allround - laser-welded **LASER**\*

- 16 mm high Segments
- Wet cutting
- General purpose, concrete, bricks, exposed aggregate concrete, stone and granite

Ø (mm)	Bore (mm)	Segments (mm)			Qty	Order number
		L	W	H		
350	25,4	40,0	3,4	16,0	24	WRX1351
400	25,4	40,0	3,4	16,0	28	WRX1401





**For Table Saw, Concrete Universal, Exposed aggregate concrete, Hard stone**



## RX1S Universal - laser-welded



- 16 mm Segment
- Universal Diamond Blade for Stone Saws
- Detenso steel-core
- Lange und konstante Laufzeit
- Concrete, exposed aggregate, bricks, clinker, granite, hard stone, general purpose

Ø (mm)	Bore (mm)	Segments (mm)				Order number
		L	W	H	Qty	
300	25,4	40,0	3,2	16,0	20	RX1S 301
350	25,4	40,0	3,4	16,0	24	RX1S 351
400	25,4	40,0	3,4	16,0	28	RX1S 401
450	25,4	40,0	3,6	16,0	32	RX1S 450
500	25,4	40,0	4,5	16,0	36	RX1S 500
600	25,4	40,0	4,5	16,0	40	RX1S 600



## SG35 Granite turbo - laser-welded



- 10 mm Turbosegment für optimised cooling
- Narrow toothed - silent design
- Granite, hard stone, natural and cast stone, stone, hard clinkers

Ø (mm)	Bore (mm)	Segments (mm)				Order number
		L	W	H	Qty	
350	30,0/25,4	31,0	2,8	10,0	24	0396 327 0350
350	25,4	31,0	2,8	10,0	24	0396 327 0351
400	30,0/25,4	31,0	3,2	10,0	30	0396 327 0400
450	30,0/25,4	31,0	3,4	10,0	34	0396 327 0450
500	25,4	31,0	4,5	10,0	38	0396 327 0501
600	25,4	31,0	4,5	10,0	44	0396 327 0601



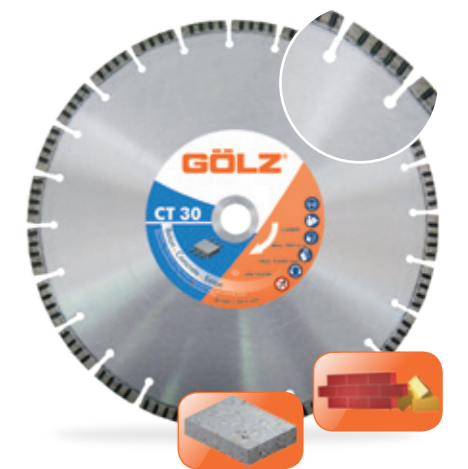
**For Block Saws, Brickwork and abrasive Block stones**

## CT30 Beton Standard - laser-welded



- 10 mm Turbosegment
- Good cutting performance
- For MS600A / MS700A
- General purpose, concrete, reinforced concrete

Ø (mm)	Bore (mm)	Segments (mm)				Order number
		L	W	H	Qty	
600	25,4	40,0	4,0	10,0	42	CT30 601
700	25,4	40,0	4,2	10,0	50	CT30 701



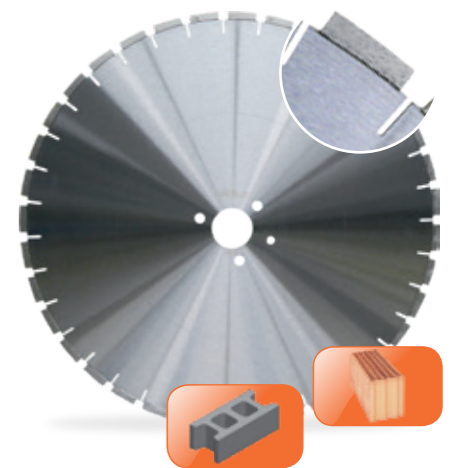
**Diamond Blade for abrasive material on Block Saws**

## BS30 Limestone standard



- 10 mm Segment
- Laser-welded
- Sandstone, poroton, pumice, bricks, abrasive concrete

Ø (mm)	Bore (mm)	Segments (mm)				Order number
		L	W	H	Qty	
650	60,0	40,0	4,4	10,0	36	0396 329 0650
900	60,0	40,0	4,8	10,0	46	0396 329 0900
1000	60,0	40,0	4,8	10,0	56	0396 329 1000



## Diamond Blades for Floor Saws





## Use recommendation

	AS 20	AS 22	AS 25	AS 42	AS 60	AS 75	AS 85	CS 20	CS 22	CS 25GX	CT 30	CT 40	FB 10	GX 200	LB 55	LCA 65
General purpose																
Asphalt	■	■	■	■	■	■	■									■
Concrete								■	■	■	■	■		■	■	■
Abrasive concrete												□				
Reinforced concrete								■	■	■	□	■		■	□	
Concrete products											■	■			■	■
Concrete and hard components												■			□	
Lime floor	■		■		■											
Fresh concrete	□				□								■			■
Hard clincers / bricks															□	
Medium hard clincers / bricks															■	
Soft clincers / bricks															■	
Brickwork																■
Exposed aggregate concrete															■	
Page	36	37	37	36	35	35	35	31	31	32	29	29	33	32	30	30

■ well suitable □ limited suitable

■ well suitable □ limited suitable

## Concrete Saws



### CT30 Beton Standard - laser-welded



- 10 mm Turbosegment
- Good cutting performance
- For floor saws up to 7,5 kW
- General purpose, concrete, reinforced concrete

Ø (mm)	Bore (mm)	Segments (mm)			Qty	Order number
		L	W	H		
350	25,4	40,0	2,8	10,0	24	CT30 351
400	25,4	40,0	3,2	10,0	28	CT30 401
450	25,4	40,0	3,2	10,0	32	CT30 451
500	25,4	40,0	3,2	10,0	36	CT30 501
600	25,4	40,0	4,0	10,0	42	CT30 601

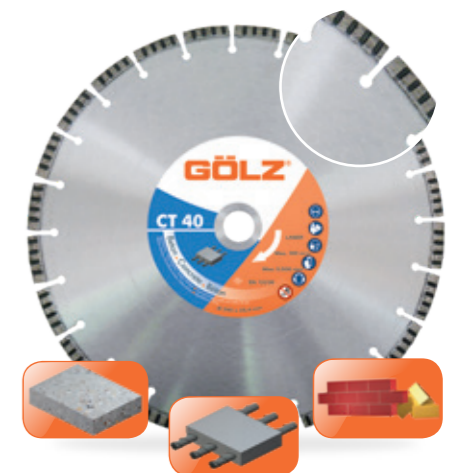


### CT40 Beton Premium - laser-welded



- 10 mm Turbosegment
- Excellent life
- For floor saw up to 11 kW
- Concrete, reinforced concrete, cured concrete

Ø (mm)	Bore (mm)	Segments (mm)			Qty	Order number
		L	W	H		
350	25,4	40,0	2,8	10,0	24	CT40 351
400	25,4	40,0	3,2	10,0	28	CT40 401
450	25,4	40,0	3,6	10,0	32	CT40 451
500	25,4	40,0	3,6	10,0	36	CT40 501
600	25,4	40,0	4,0	10,0	40	CT40 601





## Concrete Saws



### LB55 Beton Premium - laser-welded



- 8+2 mm Segment height
- For Floor saws up to 11 kW
- Concrete, reinforced concrete, general purpose

Ø (mm)	Bore (mm)	Segments (mm)			Qty	Order number
		L	W	H		
300	20,0	40,0	2,8	10	20	0497 855 0300
300	25,4	40,0	2,8	10	20	0497 855 0301
350	20,0	40,0	2,8	10	23	0497 855 0350
350	25,4	40,0	2,8	10	23	0497 855 0351
400	20,0	40,0	3,2	10	27	0497 855 0400
400	25,4	40,0	3,2	10	27	0497 855 0401
450	25,4	40,0	3,4	10	30	0497 855 0450
500	25,4	40,0	4,0	10	33	0497 855 0500
600	25,4	40,0	4,0	10	40	0497 855 0600

## Allround Diamond Blade for Concrete and Asphalt. Brand New Mix-Segment Constellation!



### LCA65 Allround - laser-welded



- 10 mm Segmenthöhe
- Turbo/Flat Segments for abrasive to hard materials
- Concrete, asphalt, general purpose

Ø (mm)	Bore (mm)	Segments (mm)			Qty	Order number
		L	B	H		
300	25,4	40,0	3,2	10,0	20	LCA65 301
350	25,4	40,0	3,2	10,0	24	LCA65 351
400	25,4	40,0	3,6	10,0	28	LCA65 401
450	25,4	40,0	3,4	10,0	32	0497 865 0450
500	25,4	40,0	3,6	10,0	34	0497 865 0501



## Betonsägen für leistungsstarke Fugenschneider

### CS20 Concrete classic - laser-welded



- 12 mm Segment height
- For floor saws up to 10 kW
- Concrete, reinforced concrete

Ø (mm)	Bore (mm)	Segments (mm)			Qty	Order number
		L	W	H		
500	25,4	40,0	4,0	12,0	36	CS20 50040
600	25,4	40,0	4,0	12,0	42	CS20 60040
700	25,4	40,0	4,0	12,0	45	CS20 70040
800	25,4	40,0	4,0	12,0	52	CS20 80040

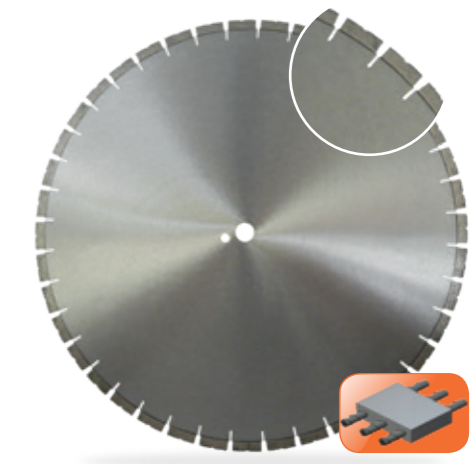


### CS22 Universal - Laser-welded



- 12 mm Segment height
- Diamond blade with good life and cutting power
- For floor saws up to 15 kW
- Concrete, reinforced concrete

Ø (mm)	Bore (mm)	Segments (mm)			Qty	Order number
		L	W	H		
600	25,4	40,0	4,0	12,0	42	CS22 60040
700	25,4	40,0	4,0	12,0	46	CS22 70040
800	25,4	40,0	4,0	12,0	52	CS22 80040







## GX200 Galaxis concrete saw

- 12 mm Segmenthöhe
- ideal life in concrete
- systematic diamond arrangement
- For floor saws from 7,5 kW
- Concrete, reinforced concrete



Ø (mm)	Bore (mm)	Segments (mm)			Qty	Order number
		L	W	H		
600	25,4	40,0	4,0	12,0	36	GX200 601
700	25,4	40,0	4,0	12,0	40	GX200 701
800	25,4	40,0	4,0	12,0	46	GX200 801



## CS25GX Concrete - laser-welded

- 12 mm Segmenthöhe
- systematic diamond arrangement for aggressive cutting performance
- For floor saws from 20 kW up to 40 kW
- Concrete



Ø (mm)	Bore (mm)	Segments (mm)			Qty	Order number
		L	W	H		
600	35,0	40,0	4,8	12,0	42	CS25GX 60045
700	35,0	40,0	4,5	12,0	46	CS25GX 70045
800	35,0	40,0	4,5	12,0	52	CS25GX 80045
1000	35,0	40,0	4,5	12,0	68	CS25GX 100045

## Diamond Cutter and Chamfering

### FB 10/slim Green concrete blade

- 10 mm Segment height
- For floor saw up to 10 kW
- Green concrete with hard and medium hard components



Ø (mm)	Bore (mm)	Segments (mm)			Qty	Order number
		L	W	H		
350	25,4	40,0	3,2	10,0	24	0497 270 0351
350	25,4	40,0	2,8	10,0	24	0497 271 0351

### Chamfering 2-pieces

- Chamfering of joint up to 45°, rim speed 55m/s
- width 14mm, for a joint width from 2mm up to 25mm
- supply includes 1 set (2 parts)
- Green concrete with hard and medium hard components



Dimension (mm)	Bore (mm)	Order number
280 x 14 x 3,6	of choice	028.818.92

### Chamfering 1-piece

- Chamfering of joint up to 45°, rim speed 55m/s
- width 12mm, for a joint width to 10mm
- Green concrete with hard and medium hard components



Dimension (mm)	Bore (mm)	Order number
280 x 12 x 6	of choice	028.888.92



## Diamond Milling Cutter Concrete

- Joint Milling for concrete, such as induction loops

Ø (mm)	Dimension (mm)	Bore (mm)	Order number
350	350 x 6,0 x 7	25,4	135 267 06
350	350 x 10,0 x 7	25,4	136 207 06
400	400 x 10,0 x 7	25,4	142 207 06



## Diamond Milling Cutter Asphalt

- Joint Milling for asphalt, such as induction loops

Ø (mm)	Dimension (mm)	Bore (mm)	Order number
350	350 x 6,0 x 6,5	25,4	135 266 91
350	350 x 10,0 x 6,5	25,4	137 206 91
400	400 x 8,0 x 6,5	25,4	140 286 91
400	400 x 10,0 x 6,5	25,4	141 206 91



## Asphalt Saws

### AS60 Asphalt Standard - Laser-welded

**LASER** ✱

- 10 mm Segment height
- For Floor Saws up to 7,5 kW
- Asphalt, lime floor, medium hard clinker, general purpose

Ø (mm)	Bore (mm)	Segments (mm)				Order number
		L	W	H	Qty	
350	25,4	40,0	2,8	10,0	24	AS60 351
400	25,4	40,0	3,2	10,0	28	AS60 405
450	25,4	40,0	3,6	10,0	32	AS60 451
500	25,4	40,0	3,6	10,0	36	AS60 501



### AS75 Asphalt Premium - Laser-welded

**LASER** ✱

- 10 mm Segment height
- With deep segments for undercut protection
- For Floor Saws up to 11 kW
- Asphalt, lime floor, abrasive material

Ø (mm)	Bore (mm)	Segments (mm)				Order number
		L	W	H	Qty	
350	25,4	40,0	2,8	10,0	21	AS75 351
400	25,4	40,0	3,2	10,0	24	AS75 401
450	25,4	40,0	3,4	10,0	28	AS75 451
500	25,4	40,0	3,4	10,0	30	AS75 501
600	25,4	40,0	4,0	10,0	36	AS75 601



### AS85 Asphalt Premium - Laser-welded

**LASER** ✱

- 10 mm Segmenthöhe
- With deep segments for undercut protection
- For Floor Saws up to 15 kW
- Asphalt, lime floor, abrasive material

Ø (mm)	Bore (mm)	Segments (mm)				Order number
		L	W	H	Qty	
350	25,4	40,0	2,8	10,0	21	AS85 351
400	25,4	40,0	3,2	10,0	24	AS85 401
450	25,4	40,0	3,4	10,0	28	AS85 451
500	25,4	40,0	3,4	10,0	30	AS85 501
600	25,4	40,0	4,0	10,0	36	AS85 601





## Asphalt Saws for powerful Floor Saws



### AS42 Asphalt - Laser-welded



- tooth form C 1 S, with protection segments
- For Floor Saws up to 20 kW
- best results when peripheral speed is 40-45 m/s
- Asphalt

Ø (mm)	Bore (mm)	Segments (mm)				Order number
		L	W	H	Qty	
600	25,4	40,0	3,6	10,0	36	0396 342 0600
700	25,4	40,0	3,6	10,0	40	0396 342 0700
800	25,4	40,0	4,5	12,0	45	0396 342 0801

### AS22 Asphalt Standard - Laser-welded



- 10 mm Segment height
- With drop segments
- For Floor Saws from 15 kW
- Asphalt

Ø (mm)	Bore (mm)	Segments (mm)				Order number
		L	W	H	Qty	
500	25,4	40,0	3,6	10,0	36	AS22 50036
600	25,4	40,0	4,0	10,0	42	AS22 60040
700	25,4	40,0	4,6	10,0	45	AS22 70046
800	25,4	40,0	4,8	10,0	52	AS22 80048



### AS20 Asphalt Classic - Laser-welded



- With drop segments
- good life in Asphalt
- For Floor Saws up to 10 kW
- Asphalt

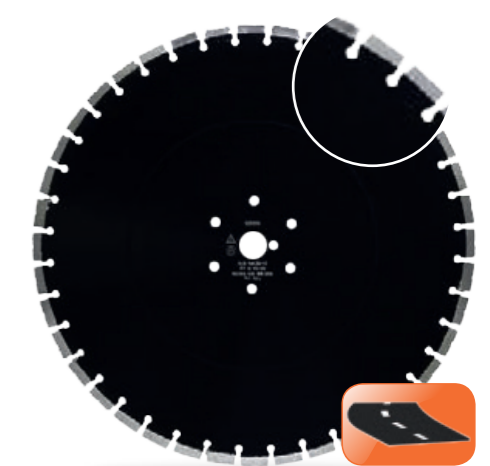
Ø (mm)	Bore (mm)	Segments (mm)				Order number
		L	W	H	Qty	
500	25,4	40,0	3,6	10,0	36	AS20 50036
600	25,4	40,0	4,0	10,0	42	AS20 60040
700	25,4	40,0	4,6	10,0	45	AS20 70046
800	25,4	40,0	4,8	10,0	52	AS20 80048

### AS25 Asphalt Standard - Laser-welded



- With drop segments and 12 mm Segment height
- For powerful Floor Saws from 20 kW
- Asphalt, lime floor, abrasive material

Ø (mm)	Bore (mm)	Segments (mm)				Order number
		L	W	H	Qty	
500	35,0	40,0	3,6	12,0	32	AS25 50036
600	35,0	40,0	4,6	12,0	42	AS25 60046
700	35,0	40,0	4,6	12,0	46	AS25 70046
800	35,0	40,0	4,6	12,0	52	AS25 80046
1000	35,0	40,0	4,6	12,0	68	AS25 100046



# Diamond Blades for Cut Off Saws



## Use recommendation

	DA 60	GX-ULT2	LA 75	LA 85	LB 20	LB 55	LCA 65	LCP 1	LSP 3	LT 30	LT 40	MX1	RX1	SG 35	Stardust	Stardust Steel	TP 35	TS 35
General purpose						●		●		●	●		●	○				
Asphalt	●		●	●			●						○					
Basalt								○	●					●	○			
Beton		●			●	●	●	●	●	●	●		●	●	●		●	●
Abrasive concrete	●	○	●	●														
Reinforced concrete		●			●	○		●	●	○	●	●	●	○	○		●	●
Concrete products						○	●	●			●							
Concrete and hard components						○						●						
Roofing tile								○		○	●							
Lime floor	●		○	○														
Fireproof stone		●						●	●					○				
Fresh concrete			●	●		●												
Granite		●							●	○		●	●	●	○			○
Cast iron									●							●		
Wood																●		
Limestone								●				●						
Sand-lime brick highly compressed													●					
Hard clincers / bricks		○				○		●	●		○	●	●					○
Medium hard clincers / bricks		●	○	○		●		●	○	●	●	●	●	●				●
Soft clincers / bricks		○	●	●		●		○			○	●	●					
Marble													●					
Brickwork							●									●	●	●
Poroton																		
Porphy								○	○	○		○		●				
PVC																●		
Quartzite								○	○					●				
Sandstein			●	●	○			●					●					
Fire clay								●	●					○				
Slate										○	○							
Steel																●	●	
Stoneware											○							
Exposed aggregate concrete		●				●		●		●	●	●	●	●				●

● well suitable ○ limited suitable



## For Gas Cut Off Saws and Hand-Held Saws



### LB20 Beton Standard - Laser-welded



- 10 mm Segment height
- Universal Blade with good price-performance ratio
- Concrete, reinforced concrete - universal

Ø (mm)	Bore (mm)	Segments (mm)				Order number
		L	W	H	Qty	
300	20,0	40,0	3,2	10,0	20	LB20 300
350	20,0	40,0	3,2	10,0	24	LB20 350
350	25,4	40,0	3,2	10,0	24	LB20 351
400	20,0	40,0	3,6	10,0	28	LB20 400
400	25,4	40,0	3,6	10,0	28	LB20 401



### LT30 Concrete - Laser-welded



- 10 mm Turbo-Segment
- excellent cutting speed
- Concrete, reinforced concrete, bricks, middle hard clinkers, general purpose

Ø (mm)	Bore (mm)	Segments (mm)				Order number
		L	W	H	Qty	
300	20,0	40,0	3,2	10,0	20	LT30 300
300	25,4	40,0	3,2	10,0	20	LT30 301
350	20,0	40,0	3,2	10,0	24	LT30 350
350	25,4	40,0	3,2	10,0	24	LT30 351
400	20,0	40,0	3,6	10,0	28	LT30 400
400	25,4/20,0	40,0	3,6	10,0	28	LT30 405



### LT40 Concrete Premium - Laser-welded



- 10 mm Turbo-Segment
- Powerful Diamond Blade with good life time
- Concrete, reinforced concrete, bricks, exposed aggregate concrete, clinkers, stones, general purpose

Ø (mm)	Bore (mm)	Segments (mm)				Order number
		L	W	H	Qty	
300	20,0	40,0	3,2	10,0	20	LT40 300
300	25,4	40,0	3,2	10,0	20	LT40 301
350	20,0	40,0	3,2	10,0	24	LT40 350
350	25,4	40,0	3,2	10,0	24	LT40 351
400	20,0	40,0	3,6	10,0	28	LT40 400
400	25,4	40,0	3,6	10,0	28	LT40 401
400	25,4/20,0	40,0	3,6	10,0	28	LT40 405



## For Gas Cut Off Saws and Hand-Held Saws

### GX-UL12 Laser-welded



- 12 mm Segment height
- Professional Diamond Blade with systematic diamond arrangement
- Granite, clinkers, concrete, reinforced concrete, exposed aggregate concrete and bricks

Ø (mm)	Bore (mm)	Segments (mm)				Order number
		L	W	H	Qty	
350	20,0	40,0	3,0	12,0	24	GX.UL12 350
350	25,4	40,0	3,0	12,0	24	GX.UL12 351
400	20,0	40,0	3,4	12,0	28	GX.UL12 400
400	25,4	40,0	3,4	12,0	28	GX.UL12 401



### RX1 Allround - Laser-welded



- 16 mm Turbosegment
- General purpose, concrete, bricks, exposed aggregate concrete, stone and granite

Ø (mm)	Bore (mm)	Segments (mm)				Order number
		L	W	H	Qty	
350	25,4	40,0	3,4	16,0	24	RX1 351
400	25,4	40,0	3,4	16,0	28	RX1 401





## LB55 Concrete Premium - Laser-welded **LASER**\*

- 10 mm Segment height
- For Floor Saws up to 11 kW
- Concrete, reinforced concrete, general purpose

Ø (mm)	Bore (mm)	Segments (mm)			Qty	Order number
		L	W	H		
300	20,0	40,0	2,8	10	20	0497 855 0300
300	25,4	40,0	2,8	10	20	0497 855 0301
350	20,0	40,0	2,8	10	23	0497 855 0350
350	25,4	40,0	2,8	10	23	0497 855 0351
400	20,0	40,0	3,2	10	27	0497 855 0400
400	25,4	40,0	3,2	10	27	0497 855 0401



## LCP1 Concrete Premium - Laser-welded **LASER**\*

- 10 mm Segment height
- Hightech-Diamond Blade Premium Plus
- Concrete, exposed aggregate concrete, hard bricks, clinker, material with hard components

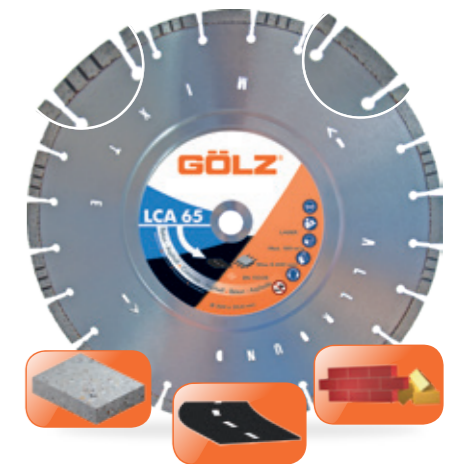
Ø (mm)	Bore (mm)	Segments (mm)			Qty	Order number
		L	W	H		
300	20,0	40,0	3,2	10,0	20	LCP1 300
300	25,4	40,0	3,2	10,0	20	LCP1 301
350	20,0	40,0	3,2	10,0	24	LCP1 350
350	25,4	40,0	3,2	10,0	24	LCP1 351
400	20,0	40,0	3,6	10,0	28	LCP1 400
400	25,4/20,0	40,0	3,6	10,0	28	LCP1 405

## Allround Diamond Blade for Concrete and Asphalt.

## LCA 65 Allround Concrete & Asphalt **LASER**\*

- Segment height 10 mm
- Laser-welded
- Turbo/Flat Segments for abrasive to hard Material
- Turbosegment for optimised cooling
- Excellent cutting speed with good life
- Concrete, asphalt, general purpose

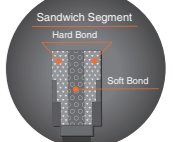
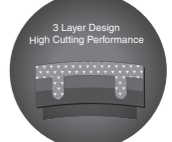
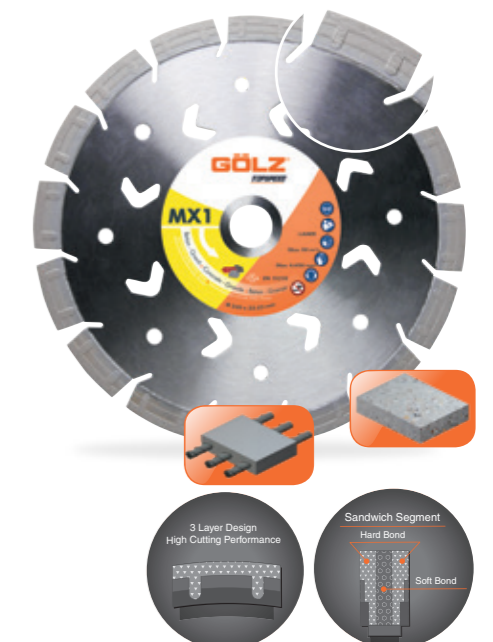
Ø (mm)	Bore (mm)	Segments (mm)			Qty	Order number
		L	W	H		
300	20,0	40,0	3,2	10,0	20	LCA65 300
300	25,4	40,0	3,2	10,0	20	LCA65 301
350	20,0	40,0	3,2	10,0	24	LCA65 350
350	25,4	40,0	3,2	10,0	24	LCA65 351
400	20,0	40,0	3,6	10,0	28	LCA65 400
400	25,4	40,0	3,6	10,0	28	LCA65 401



## MX1 3-Step-Segment - Laser-welded **LASER**\*

- 14 mm Segment height
- Granite, clinkers, concrete, reinforced concrete, exposed aggregate concrete, bricks

Ø (mm)	Bore (mm)	Segments (mm)			Qty	Order number
		L	W	H		
300	20,0	39,0	3,6	14,0	20	MX1 300
300	25,4	39,0	3,6	14,0	20	MX1 301
350	20,0	39,0	3,6	14,0	24	MX1 350
350	25,4	39,0	3,6	14,0	24	MX1 351
400	20,0	39,0	3,8	14,0	28	MX1 400
400	25,4	39,0	3,8	14,0	28	MX1 401





## SG35 Granite Turbo - Laser-welded LASER\*

- Narrow toothed - silent design
- Granite, hard stone, natural and cast stone, stone, hard clinkers

Ø (mm)	Bore (mm)	Segments (mm)			Qty	Order number
		L	W	H		
300	20,0	31,0	2,8	10,0	20	0396 327 0302
350	20,0	31,0	2,8	10,0	24	0396 327 0352
400	20,0	31,0	3,2	10,0	30	0396 327 0402



## LSP3 Granite Premium - Laser-welded LASER\*

- Granite, hard stone, concrete with hard components, reinforced concrete, ductile iron pipes, steel

Ø (mm)	Bore (mm)	Segments (mm)			Qty	Order number
		L	W	H		
300	20,0	40,0	3,2	10,0	20	LSP3 300
300	25,4	40,0	3,2	10,0	20	LSP3 301
350	20,0	40,0	3,2	10,0	24	LSP3 350
350	25,4	40,0	3,2	10,0	24	LSP3 351
400	20,0	40,0	3,6	10,0	28	LSP3 400
400	25,4/20,0	40,0	3,6	10,0	28	LSP3 405

## Hard Bond for abrasive material Standard Diamond Blade for Asphalt



## DA 60 Standard - Laser-welded LASER\*

- 10 mm Segment height
- Application: Asphalt, lime floor, medium hard clinker, general purpose

Ø (mm)	Bore (mm)	Segments (mm)			Qty	Order number
		L	B	H		
300	20,0	40,0	2,8	10,0	20	DA60 10 300
300	25,4	40,0	2,8	10,0	20	DA60 10 301
350	20,0	40,0	2,8	10,0	24	DA60 10 350
350	25,4	40,0	2,8	10,0	24	DA60 10 351
400	20,0	40,0	3,2	10,0	28	DA60 10 400
400	25,4/20,0	40,0	3,2	10,0	28	DA60 10 405



**Hard Bond for abrasive material. Professional Diamond Tools with outstanding Extras for Asphalt!**



**GÖLZ-STARDUST**  
The new Diamond-Grip Technology



### LA75 Premium - Laser-welded

- Segment height 10 mm
- Good Life
- With deep segments for undercut protection
- Asphalt, lime floor, abrasive material



Ø (mm)	Bore (mm)	Segments (mm)				Qty	Order number
		L	W	H			
300	20,0	40,0	2,8	10,0	18	LA75 300	
300	25,4	40,0	2,8	10,0	18	LA75 301	
350	20,0	40,0	2,8	10,0	21	LA75 350	
350	25,4	40,0	2,8	10,0	21	LA75 351	
400	20,0	40,0	3,2	10,0	24	LA75 400	
400	25,4/20,0	40,0	3,2	10,0	24	LA75 405	

### Stardust Premium Grip Technology

- Up to 30 % faster than conventional Diamond Blades
- Superior cutting speed in nearly all materials
- No blade change necessary
- No cutting problems with slow and polished tools
- double the number of Diamonds
- Concrete, steel, stone, cast iron, PVC, wood



Ø (mm)	Bore (mm)	Segments (mm)		Order number
		L	W	
300	20,0	3,4	3,0	0396 802 0300
350	20,0	3,4	3,0	0396 802 0350
350	25,4	3,4	3,0	0396 802 0351
400	20,0	3,6	3,0	0396 802 0400
400	25,4	3,6	3,0	0396 802 0401



### LA85 Premium Plus - Laser-welded

- Segment height 10 mm
- Extended life
- With deep segments for undercut protection
- Asphalt, lime floor, abrasive material



Ø (mm)	Bore (mm)	Segments (mm)				Qty	Order number
		L	W	H			
300	20,0	40,0	2,8	10,0	18	LA85 300	
300	25,4	40,0	2,8	10,0	18	LA85 301	
350	20,0	40,0	2,8	10,0	21	LA85 350	
350	25,4	40,0	2,8	10,0	21	LA85 351	
400	20,0	40,0	3,2	10,0	24	LA85 400	
400	25,4	40,0	3,2	10,0	24	LA85 405	

### Stardust Steel Premium Grip Technology

- Up to 30 % faster than conventional Diamond Blades
- Superior cutting speed in steel
- No cutting problems with slow and polished tools
- Steel

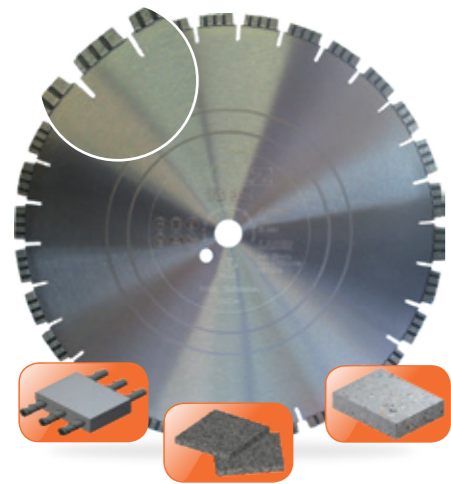


Ø (mm)	Bore (mm)	Segments (mm)		Order number
		L	W	
300	20,0	3,9	3,0	0497 804 0300
350	20,0	3,9	3,0	0497 804 0350





## For Hand-Held Electric Saws



### TS35 Concrete - Laser-welded LASER\*

- Turbo fast cutting blade for Squatina 400 and GÖLZ HE160
- Concrete, reinforced concrete

Ø (mm)	Bore (mm)	Segments (mm)				Qty	Order number
		L	W	H			
350	20,0/25,4	31,0	2,4	10,0	24	0497 807 0350	
400	25,4	31,0	2,4	10,0	30	0497 807 0401	
400	25,4	31,0	2,4	10,0	30	0497 807 0403*	

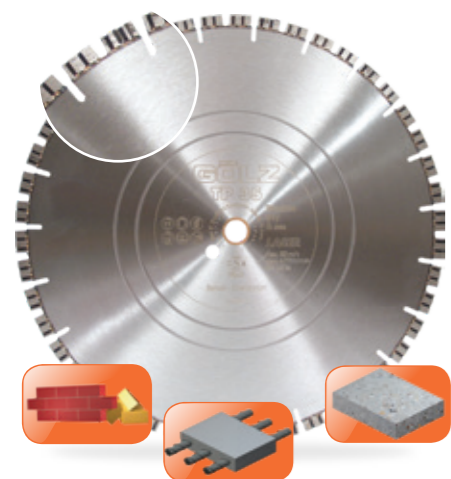
\* with Flush hole 60 mm, 6xM6 for GÖLZ HE160 and Squatina 400



### LCP1 Concrete Premium - Laser-welded LASER\*

- 10 mm Segment height
- Hightech-Diamond Blade Premium Plus
- Flush hole 60 mm, 6xM6 for Squatina 400
- Concrete, exposed aggregate concrete, hard bricks, clinker, material with hard components

Ø (mm)	Bore (mm)	Segments (mm)				Qty	Order number
		L	W	H			
400	25,4/20,0	40,0	3,6	10,0	28	0497 811 0403	



### TP35 Concrete - Laser-welded LASER\*

- Turbo pre-cut blade for hand-held power cutters (pre-cut for ring-saw)
- Concrete, reinforced concrete

Ø (mm)	Bore (mm)	Segments (mm)				Qty	Order number
		L	W	H			
400	20,0/25,4	20,0	4,5	10,0	46	0497 808 0400	

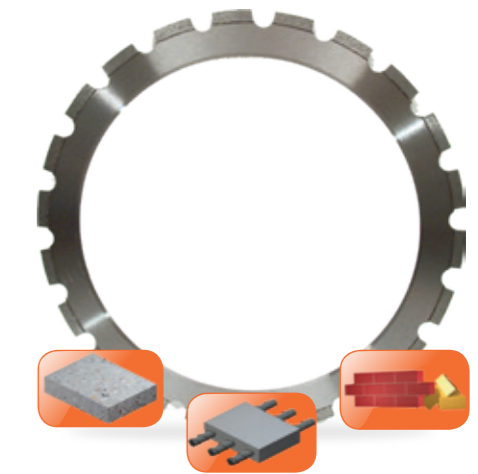


## For Hand-Held Ring Saw

### DR20/50/80

- Diamond cutting ring for ring saw

Typ	Color	Description	Order number
DR20	Yellow	Concrete, reinforced concrete	0396 890 0020
DR50	Blue	Concrete, reinforced concrete	0396 890 0050
DR80	Red	Masonry, Porous	0396 890 0080



### GX-DR400

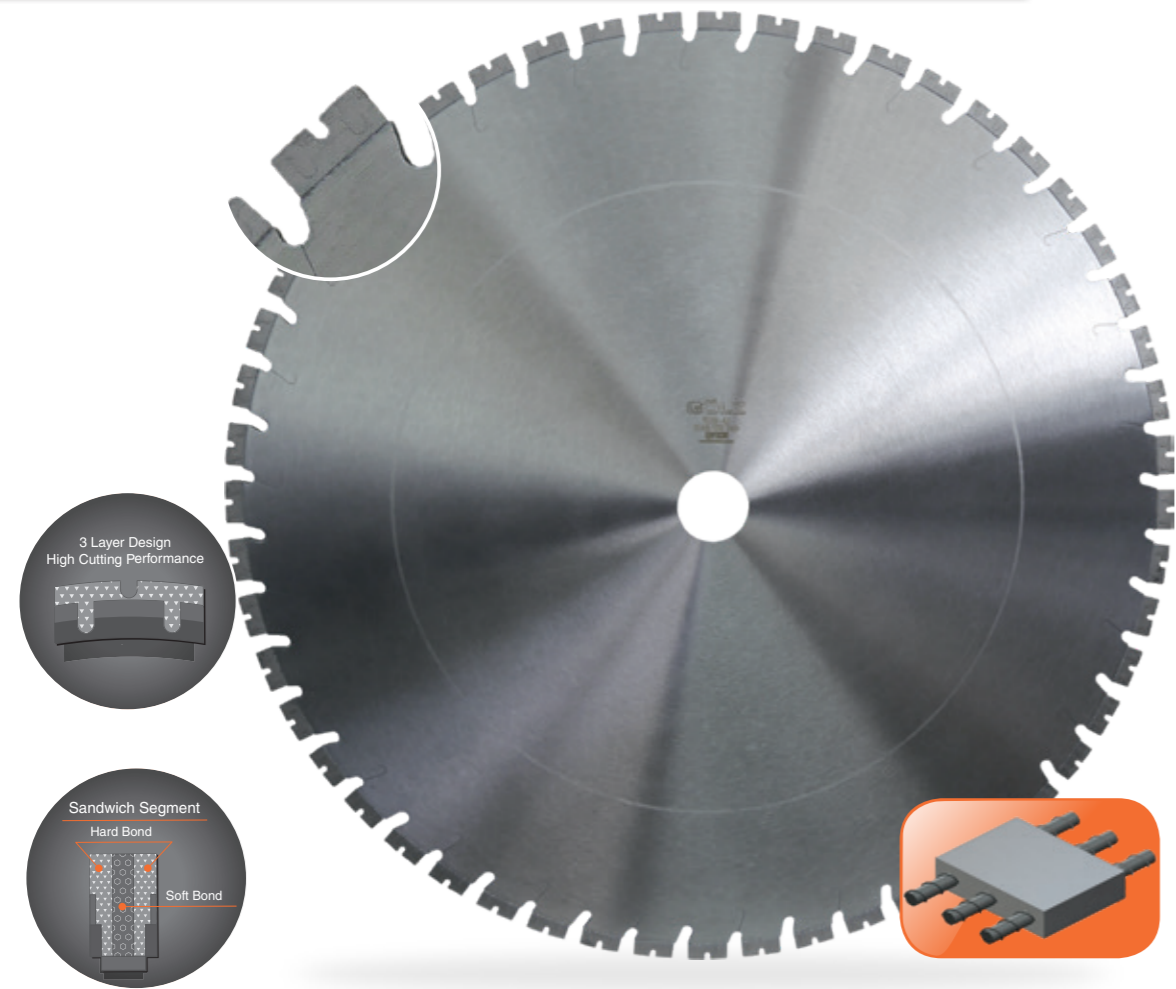


- Diamond ring with systematic diamond arrangement
- for High-frequency Saw Kogia
- incl. 2 x Drive wheel and screw
- Concrete, reinforced concrete

Ø (mm)	Segments (mm)				Qty	Order number
	L	W	H			
400	33,0	4,0	10,0	26	0497 890 0020	



## Diamond Blades for Wall Saws in Professional Use



### Wall Saw Blade with 3-Step-Segment for effective and fast cutting

#### WS10 Highspeed wall saw blade

- For wall saws from 20 kW and more
- Segment height 14 mm
- New 3-step-segment for effective and fast cutting
- Reinforced concrete



Ø (mm)	Bore (mm)	Segments (mm)			Qty	Order number
		L	W	H		
600	60	35,0	4,8	14,0	40	WS10 60048
800	60	35,0	4,8	14,0	52	WS10 80048
1000	60	35,0	4,4	14,0	66	WS10 100044

### High-performance fast cutting blade for Wall Saws from 7,5 kW in Concrete

#### WS20 High-performance fast cutting blade

- For Wall Saws from 7,5 kW up to 15 kW
- Reinforced Concrete

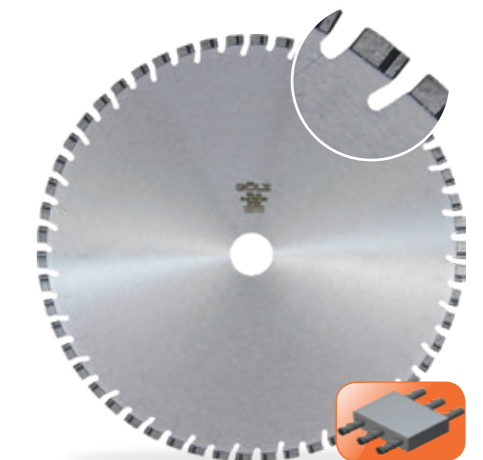
Ø (mm)	Bore (mm)	Segments (mm)			Qty	Order number
		L	W	H		
600	60	40	4,8	13,0	36	WS20 60048
625	60	40	4,8	13,0	36	WS20 62548
650	60	40	4,8	13,0	38	WS20 65048
800	60	40	4,4	13,0	46	WS20 80044
800	60	40	4,8	13,0	46	WS20 80048
825	60	40	4,8	13,0	46	WS20 82544
1000	60	40	4,4	13,0	56	WS20 100044
1200	60	40	4,4	13,0	64	WS20 120044



#### WS3 High-performance fast cutting blade

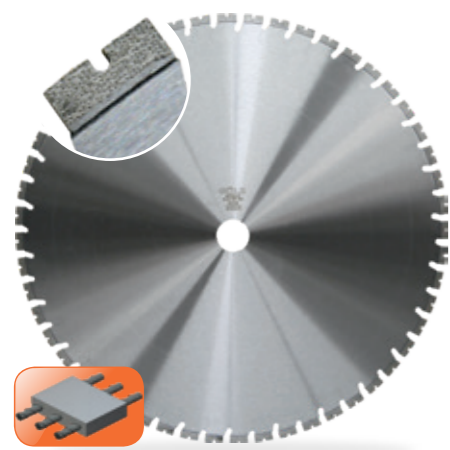
- For Wall Saws from 12 kW
- optimal life, aggressive cut
- Concrete, reinforced concrete

Ø (mm)	Bore (mm)	Segments (mm)			Qty	Order number
		L	W	H		
600	60	24	5,0	12,0	54	0396 530 0601
700	60	24	5,0	12,0	60	0396 530 0701
800	60	24	4,4	12,0	70	0396 530 0800
800	60	24	5,0	12,0	70	0396 530 0801
1000	60	24	4,4	12,0	90	0396 530 1000
1200	60	24	4,4	12,0	106	0396 530 1200





## Optimal Performance by systematical diamond arrangement



### WS15GX Concrete Premium

- Wall Saw Blade with systematical diamond arrangement
- For Wall Saws from 10 kW up to 15 kW
- Concrete, reinforced Concrete



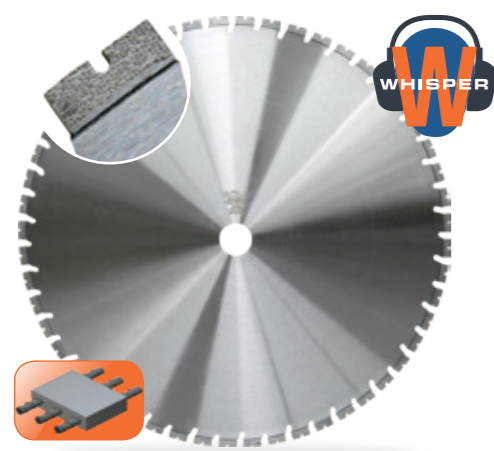
Ø (mm)	Bore (mm)	Segments (mm)			Qty	Order number
		L	W	H		
600	60	35,0	4,8	14,0	40	WS15GX 60048
800	60	35,0	4,8	14,0	52	WS15GX 80048
1000	60	35,0	4,4	14,0	66	WS15GX 100044

### GXW3 Concrete Premium - Laser-welded

- For Machines from 10 kW up to 15 kW
- optimal performance by systematical diamond arrangement
- Reinforced Concrete



Ø (mm)	Bore (mm)	Segments (mm)			Qty	Order number
		L	W	H		
600	60	24,0	4,8	12	48	GXW3 0060048
625	60	24,0	4,8	12	48	GXW3 0062648
650	60	24,0	4,8	12	52	GXW3 0065048
700	60	24,0	4,8	12	58	GXW3 0070648
800	60	24,0	4,4	12	64	GXW3 0080644
800	60	24,0	4,8	12	64	GXW3 0083048
830	60	24,0	4,4	12	64	GXW3 0083144
830	60	24,0	4,8	12	64	GXW3 0083148
1000	60	24,0	4,4	12	80	GXW3 00100644



### WS15GXW Noise-reduced-version

- Wall Saw Blade with systematical diamond arrangement
- For Wall Saws from 10 kW up to 15 kW
- Concrete, reinforced Concrete



Ø (mm)	Bore (mm)	Segments (mm)			Qty	Order number
		L	W	H		
600	60	35,0	4,8	14,0	40	WS15GXW 60048
800	60	35,0	4,8	14,0	52	WS15GXW 80048
1000	60	35,0	4,4	14,0	66	WS15GXW 100044

### GXW4 Concrete Premium - Laser-welded

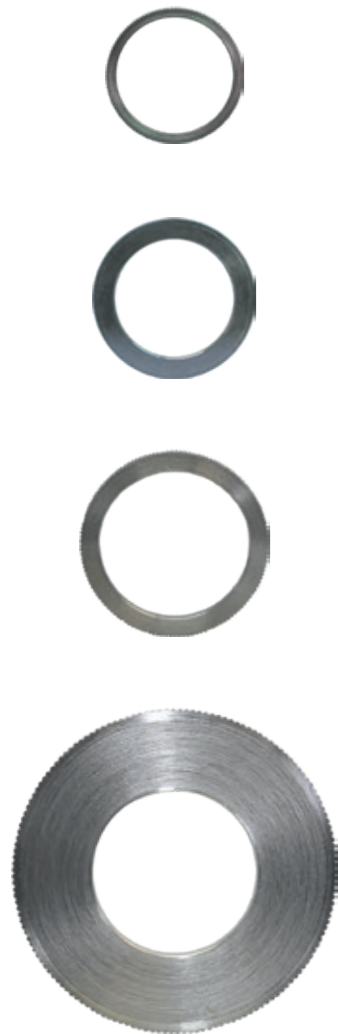
- For Machines from 15 kW up to 20 kW
- optimal performance by systematical diamond arrangement
- Reinforced Concrete



Ø (mm)	Bore (mm)	Segments (mm)			Qty	Order number
		L	W	H		
600	60	24,0	4,8	12	48	GXW4 0060048
800	60	24,0	4,4	12	64	GXW4 0080044
800	60	24,0	4,8	12	64	GXW4 0080048



## Reducing Rings



Outer Ø (mm)	Inner Ø (mm)	Width (mm)	Order number
22,2	15	1,5	0296 310 0031
22,2	20	1,8	0296 310 0023
25,4	20	10 (STIHL)	0282 000 0002
25,4	16	1,8	0296 310 0027
25,4	20	1,8	0296 310 0024
25,4	20	2,2	0296 310 0000
25,4	20	2,5	0296 310 0001
25,4	20	2,8	0296 310 0002
25,4	22,2	1,8	0296 310 0025
25,4	22,2	2,5	0296 310 0003
25,4	22,2	2,8	0296 310 0004
30,0	25,4	1,6	0296 310 0038
30,0	25,4	1,8	0296 310 0029
30,0	25,4	2,2	0296 310 0033
30,0	25,4	2,5	0296 310 0005
30,0	25,4	2,8	0296 310 0006
30,0	25,4	3,5	0296 310 0007
30,0	15	1,2	0296 310 0032
30,0	20	1,8	0296 310 0030
30,0	22,2	1,2	0296 310 0035
30,0	22,2	1,8	0296 310 0077
30,0	25,4	1,2	0296 310 0034
35,0	25,4	2,5	0296 310 0008
35,0	25,4	2,8	0296 310 0009
35,0	25,4	3,5	0296 310 0010
50,0	25,4	2,8	0296 310 0022
50,0	25,4	3,5	0296 310 0011
50,0	30	3,5	0296 310 0013
50,0	35	2,8	0296 310 0028
50,0	35	3,4	0296 310 0015
60,0	25,4	2,8	0296 310 0021
60,0	25,4	3,5	0296 310 0012
60,0	30	3,5	0296 310 0014
60,0	35	2,8	0296 310 0037
60,0	35	3,5	0296 310 0016
60,0	50	2,8	0296 310 0036
60,0	50	3,5	0296 310 0017
60,0	55	3,5	0296 310 0018
80,0	50	3,5	0296 310 0019
80,0	60	3,5	0296 310 0020

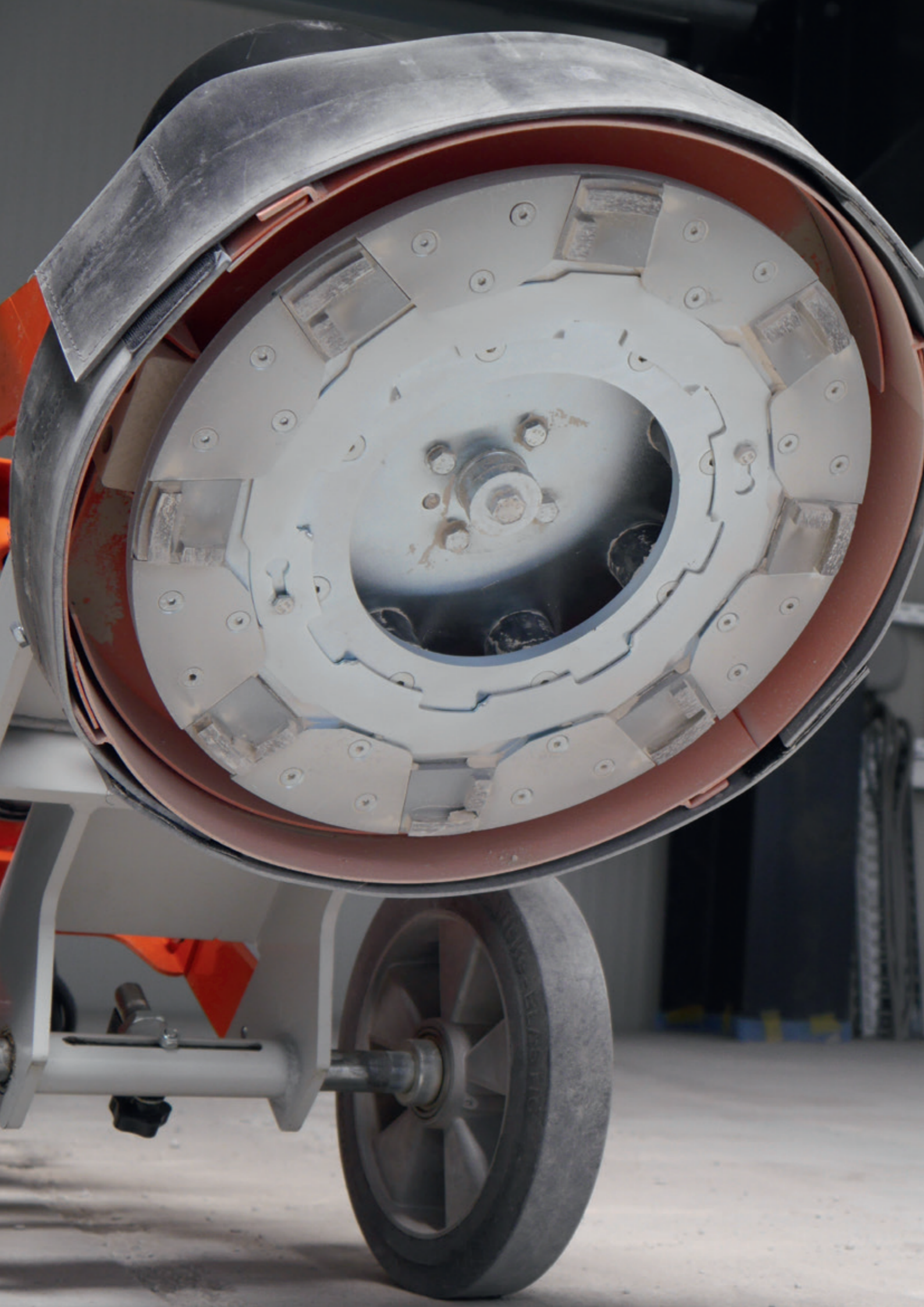
## Surface speed recommendation chart corresponding DIN EN 13236:2016-05

Ø (mm)	RPM at surface speed of:						
	35 m/Sec	40 m/Sec	45 m/Sec	50 m/Sec	63 m/Sec	80 m/Sec	100 m/Sec
115	5850	6650	7500	8350	10500	13300	16650
125	5350	6150	6900	7650	9650	12250	15300
150	4500	5100	5750	6400	8050	10200	12750
180	3750	4250	4800	5350	6700	8500	10650
200	3350	3850	4300	4800	6050	7650	9550
230	2950	3350	3750	4200	5250	6650	8350
250	2700	3100	3450	3850	4850	6150	7650
300	2250	2550	2870	3200	4050	5100	6400
350	1950	2200	2450	2750	3450	4400	5500
400	1700	1950	2150	2400	3050	3850	4800
450	1500	1700	1950	2150	2700	3400	4250
500	1350	1550	1750	1950	2450	3100	3850
600	1150	1300	1450	1600	2050	2550	3200
750	895	1050	1150	1300	1650	2050	2550
800	840	960	1075	1200	1550	1950	2400
900	750	850	955	1100	1350	1700	2150
1000	670	765	860	960	1250	1550	1950
1500	450	510	575	640	805	1050	1300
1800	375	425	475	535	670	850	1100

The surface speed of saw blades depends on the material to be cut. The following surface speed can be recommended as follows:

Material to be cut	Granite		Marble, Artificial Stone, Ceramics	Concrete		Asphalt
	high quarz	low quarz		Concrete	reinforced	
Umfangsgeschwindigkeit	25 - 30	40 - 50	40 - 50	30 - 50	30 - 40	45 - 60

If the required surface speed is higher than 60 m/sec, the steel center of the blade has to be tensioned harder.

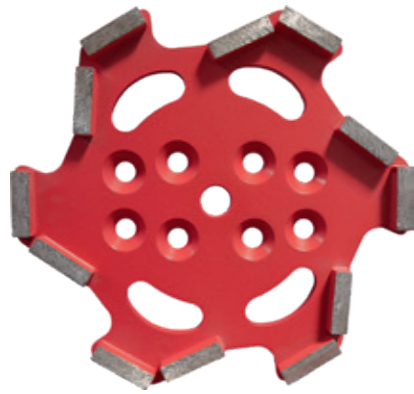


## Grinding and Polishing Tools





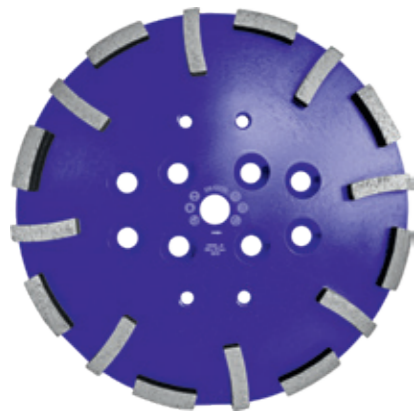
## Diamond Grinding Plates



### CG250-S Ninja-Soft

- Soft bond grinding plate for concrete

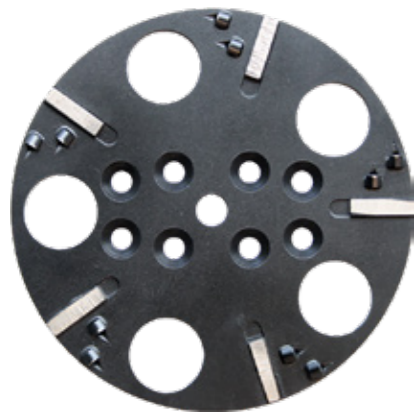
Ø (mm)	Bore (mm)	Segments (mm)				Qty	Order number
		L	B	H			
250	19	40	10	10	12	0497 529 0255	



### CG250-M Medium

- Medium bond grinding plate for medium hard flooring
- Cured Concrete, Concrete, medium hard flooring

Ø (mm)	Bore (mm)	Segments (mm)				Qty	Order number
		L	B	H			
250	19	40	10	10	16	0497 520 0250	

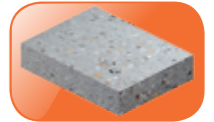


### CG250-PKD PKD & Diamond

- 5 Segments and 10 x 1,4 PKD
- Asphalt, Lime floor, Abrasive material, Adhesives

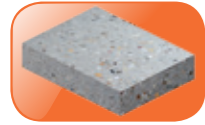
Ø (mm)	Bore (mm)	Segments (mm)				Qty	Order number
		L	B	H			
250	19	40	10	10	5	0497 529 0255	

## Easy-Slide-System






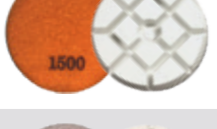

Diamond grinding tools for use in hard up to extremely soft concrete flooring. Made with medium bond and EASY-SLIDE-SYSTEM for fast and easy change of diamond tools.

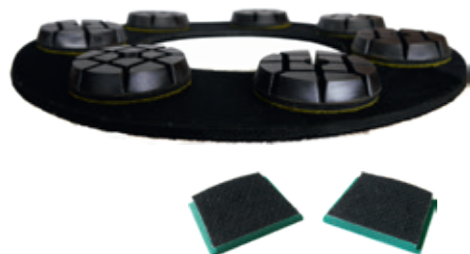
Type	Grit	Information	Order number	Color
GP 50	PKD	Aggressive grinding in Epoxi, Acryl,Gluten and Spatula	0497 530 0008	
GPD 80	PKD + D	PKD and diamond segment in Epoxi, Gluten an Spatula	0497 530 0009	
GM 20	16/18	Diamond segment medium bond, rough grit	0497 530 0003	
GM 30	30/40	rough grinding	0497 530 0004	
GM 60	60/80	medium grinding	0497 530 0005	
GM 100	100/120	finishing grinding	0497 530 0006	
GM 270	270/320	Diamond segment medium bond, small grit	0497 530 0007	



## Concrete Polishing Pads

Polishing tools for surface preparation of concrete flooring. Easy tool change by velcro device. High quality diamonds for quick polishing and good life. High gloss effect and clear surface.

Color	Grit	Ø x H (mm)	Order number
 50	50#	80 x 12	PPC50
 100	100#	80 x 12	PPC100
 200	200#	80 x 12	PPC200
 400	400#	80 x 12	PPC400
 800	800#	80 x 12	PPC800
 1500	1500#	80 x 12	PPC1500
 3000	3000#	80 x 12	PPC3000



Specification	Order number
Velcro ring Ø400 mm	VP400
Velcro ring Ø280 mm	VP280
Easy-Slide-Velcro for Velcro ring (pc.)	0284 700 0501

## Core Drilling



**Dry Drilling System without hammer and with or without swivel for sucking off the dust.**  
**Application: joint boxes**



## Dry Hollow Drills

- Connection M16

Typ	Ø (mm)	Length (mm)	#	Segment LxWxH (mm)	Order number	Information Application
DS 68	68	60	6	12 x 3,5 x 8	0296 414 0668	GREY Dry hollow drill , Standard  short segment, very good cutting, steady drilling in high-compressed sandstone
DS 82	82	60	8	12 x 3,5 x 8	0296 414 0682	
DB 10 S	68	60	6	12 x 3,5 x 8	0296 417 0668	
DB 10 S	82	60	8	12 x 3,5 x 8	0296 417 0682	



Type machine	Accessories	
	Adapter with centering drill	Order number
Standard	6-knt. / M 16	0296 516 0010
Hilti / Fein	SDS+ / M 16	0296 516 0030
Cardi / Bender / Weka	R 1/2" / M 16	0296 516 0011
Cardi T1800-82 / Gölz	M 18 x 2,5 / M 16	0296 513 0040
Bosch	5/8" - 16G / M 16	0296 516 0013

## DB 10SV Laser-welded Stand for swivel for sucking off the dust

- Connection M16
- Limestone, aerated concrete and pumice stone

**Dry hollow drills, 90 mm length, Connection M16**

Typ	Ø (mm)	Length (mm)	Segment Anzahl	Segment LxWxH (mm)	Order number
DB10SV	68	90	6	12,0 x 3,5 x 8,0	0296 415 0668
DB10SV	82	90	8	12,0 x 3,5 x 8,0	0296 415 0682

Bezeichnung	Zubehör	
	Adapter	Order number
Dust Rotor M16	M 16	0296 513 1001
Centering Pin	for hollow drills	0296 513 1002
Adapter	M 16 / R 1/2"	0296 513 1003
Adapter	M 16 / M 18 x 2,5	0296 513 1006

## Diamond Dry Drilling System

### KT 65 Drill Bit for GÖLZ Drill swivel DRILLVAC length 300 mm

- Connection 1 1/4" UNC
- For Gölz Drill swivel DRILLVAC
- brickwork, sandstone, pumice stone, proton and other abrasive material

Ø (mm)	Qty	Segment L x W x H (mm)	Length (mm)	Order number
31	3	16,0 x 3,0 x 10,0	300	D540 425 3031
41	3	16,0 x 3,0 x 10,0	300	D540 425 3041
51	3	16,0 x 3,0 x 10,0	300	D540 425 3051
56	4	16,0 x 3,0 x 10,0	300	D540 425 3056
61	4	24,0 x 3,5 x 10,0	300	D540 425 3061
68	4	24,0 x 3,5 x 10,0	300	D540 425 3068
72	4	24,0 x 3,5 x 10,0	300	D540 425 3072
82	4	24,0 x 3,5 x 10,0	300	D540 425 3082
101	5	24,0 x 3,5 x 10,0	300	D540 425 3101
111	5	24,0 x 3,5 x 10,0	300	D540 425 3111
121	5	24,0 x 4,0 x 10,0	300	D540 425 3121
131	5	24,0 x 4,0 x 10,0	300	D540 425 3131
141	5	24,0 x 4,0 x 10,0	300	D540 425 3141
151	6	24,0 x 4,0 x 10,0	300	D540 425 3151
161	6	24,0 x 4,0 x 10,0	300	D540 425 3161
181	6	24,0 x 4,0 x 10,0	300	D540 425 3181

Core drill for dry drilling for stove fitters (for refractory stones and chamotte).

Ø (mm)	Segment				Order number
	L	B	H	#	
171	24	4,0	7	6	D540 425 2171
181	24	4,0	7	6	D540 425 2181
201	24	4,0	7	6	D540 425 2201
225	24	4,0	7	7	D540 425 2225
250	24	4,0	7	10	D540 425 2250

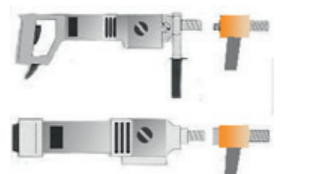
Dust Rotors - Center Drill - Accessories	
Bezeichnung	Order number
Dust Rotor DRILLVAC 1 1/4", machine connection R 1/2"	0296 513 0060
Dust Rotor DRILLVAC 1 1/4", machine connection 1 1/4"	0296 513 0065
Dust Rotor DRILLVAC 1 1/4", machine connection M 18x2,5	0296 513 0070
Center Drill 300 mm length	0296 513 0061
Center Drill 250 mm length	0296 513 0062
Slider - Quick release ring	0296 150 0112
Alu-extern. 1 1/4", 200 mm	0296 000 0036
Alu-extern. 1 1/4", 300 mm	0296 000 0037



GÖLZ recommend for dry drilling GÖLZ hand-held drills in connection with GÖLZ industrial vac.



For the drilling process GÖLZ recommends the use of center drill and quick release ring.



Dust Rotor with R 1/2" or 1 1/4" motor





## RML40 Concrete Standard

- Laser-welded – Excellent performance with good life
- Concrete with light to medium reinforcement and brickwork



Ø (mm)	Length (mm)	Segment (mm)				Order number
		L	B	H	#	
42	450	16	3,0	10	5	D640 450 4042
52	450	24	3,5	10	5	D640 450 4052
62	450	24	3,5	10	6	D640 450 4062
66	450	24	3,5	10	6	D640 450 4066
72	450	24	3,5	10	7	D640 450 4072
82	450	24	3,5	10	8	D640 450 4082
92	450	24	3,5	10	8	D640 450 4092
102	450	24	3,5	10	9	D640 450 4102
108	450	24	3,5	10	10	D640 450 4108
112	450	24	3,5	10	10	D640 450 4112
122	450	24	3,5	10	11	D640 450 4122
127	450	24	4,0	10	11	D640 450 4127
132	450	24	4,0	10	12	D640 450 4132
152	450	24	4,0	10	12	D640 450 4152
162	450	24	4,0	10	13	D640 450 4162
202	450	24	4,5	10	14	D640 450 4202

Order key retipping: R 500 450 0 - - - continue with digits for diameter

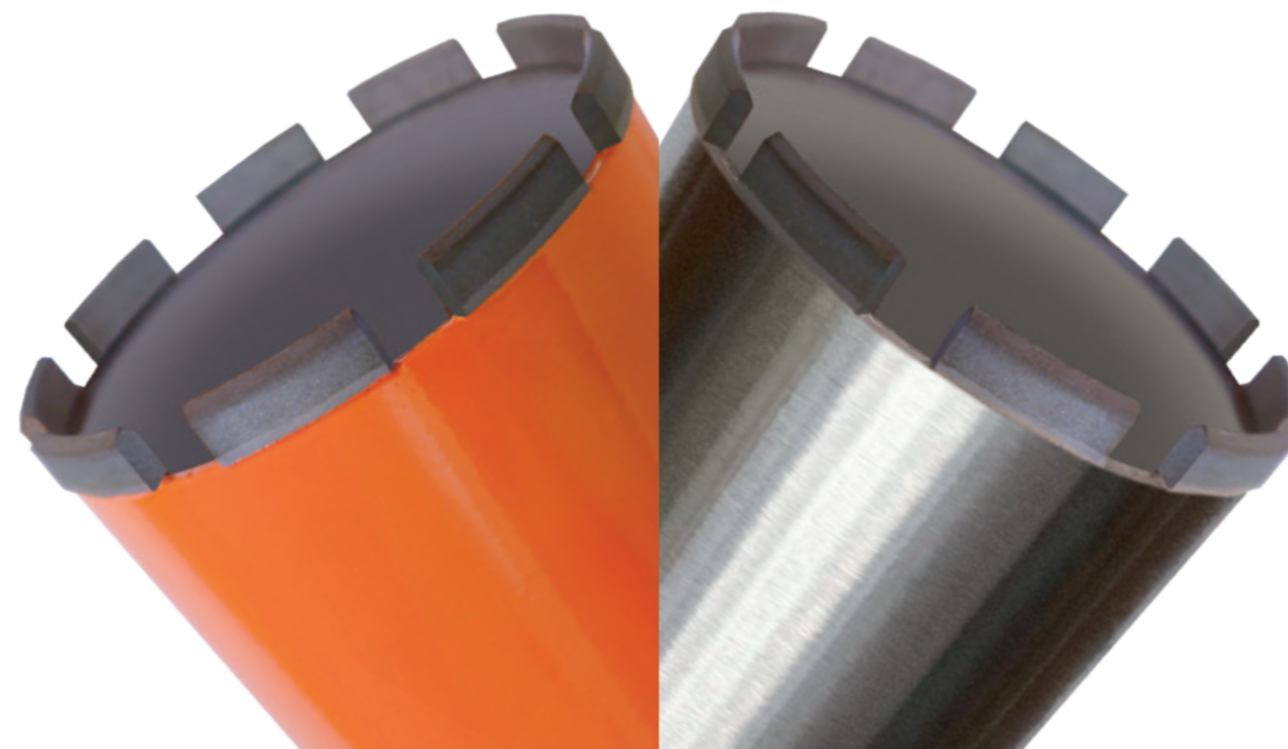
## RML50 Concrete Premium – Laser-welded

- Excellent performance with good life
- Concrete, reinforced concrete and brickwork



Ø (mm)	Length (mm)	Segment (mm)				Order number
		L	B	H	#	
42	450	16	3,0	10	5	D640 540 4042
52	450	24	3,5	10	5	D640 540 4052
62	450	24	3,5	10	6	D640 540 4062
66	450	24	3,5	10	6	D640 540 4066
72	450	24	3,5	10	7	D640 540 4072
82	450	24	3,5	10	8	D640 540 4082
92	450	24	3,5	10	8	D640 540 4092
102	450	24	3,5	10	9	D640 540 4102
108	450	24	3,5	10	10	D640 540 4108
112	450	24	3,5	10	10	D640 540 4112
122	450	24	3,5	10	11	D640 540 4122
127	450	24	4,0	10	11	D640 540 4127
132	450	24	4,0	10	12	D640 540 4132
152	450	24	4,0	10	12	D640 540 4152
162	450	24	4,0	10	13	D640 540 4162
202	450	24	4,5	10	14	D640 540 4202

Order key retipping: R 600 540 0 - - - continue with digits for diameter





## RM52 Premium Concrete

- Concrete, reinforced concrete, medium hard brickwork

Ø (mm)	Length (mm)	Segment (mm)				Order key
		L	B	H	#	
25	450	16	3,0	10	3	---- 540 4025
32	450	16	3,0	10	4	---- 540 4032
35	450	16	3,0	10	4	---- 540 4035
42	450	16	3,0	10	5	---- 540 4042
45	450	24	3,5	10	4	---- 540 4045
52	450	24	3,5	10	5	---- 540 4052
56	450	24	3,5	10	5	---- 540 4056
62	450	24	3,5	10	6	---- 540 4062
66	450	24	3,5	10	6	---- 540 4066
72	450	24	3,5	10	6	---- 540 4072
76	450	24	3,5	10	7	---- 540 4076
82	450	24	3,5	10	7	---- 540 4082
87	450	24	3,5	10	8	---- 540 4087
92	450	24	3,5	10	8	---- 540 4092
102	450	24	3,5	10	9	---- 540 4102
108	450	24	4,0	10	9	---- 540 4108
112	450	24	4,0	10	9	---- 540 4112
122	450	24	4,0	10	10	---- 540 4122
125	450	24	4,0	10	10	---- 540 4125
127	450	24	4,0	10	10	---- 540 4127
132	450	24	4,0	10	10	---- 540 4132
142	450	24	4,0	10	11	---- 540 4142
152	450	24	4,0	10	12	---- 540 4152
158	450	24	4,0	10	12	---- 540 4158
162	450	24	4,0	10	12	---- 540 4162
172	450	24	4,0	10	13	---- 540 4172
182	450	24	4,0	10	13	---- 540 4182
186	450	24	4,0	10	13	---- 540 4186
200	450	24	4,0	10	14	---- 540 4200
212	450	24	4,0	10	15	---- 540 4212
218	450	24	4,0	10	15	---- 540 4218
225	450	24	4,0	10	15	---- 540 4225
250	450	24	4,0	10	15	---- 540 4250
270	450	24	4,5	10	16	---- 540 4270
300	450	24	4,5	10	18	---- 540 4300
320	450	24	4,5	10	19	---- 540 4320
350	450	24	4,5	10	20	---- 540 4350
400	450	24	4,5	10	22	---- 540 4400

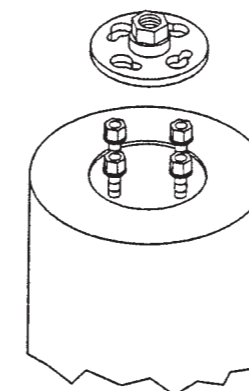
Order key retipping: R 500 540 0 - - - continue with digits for diameter  
Other Diameters and lengths available on request!

## RM52 Premium Beton

- Concrete, reinforced concrete, medium hard brickwork

Ø (mm)	Length (mm)	Segment (mm)				Order number
		L	B	H	#	
450	450 ex. Flange	24	4,5	10	23	D542 540 4450
500	450 ex. Flange	24	4,5	10	25	D542 540 4500
600	450 ex. Flange	24	4,5	10	28	D542 540 4600
700	450 ex. Flange	24	5,5	10	30	D542 540 4700
800	450 ex. Flange	24	5,5	10	35	D542 540 4800
900	450 ex. Flange	24	5,5	10	40	D542 540 4900
1000	450 ex. Flange	24	5,5	10	45	D542 540 4910
1100	450 ex. Flange	24	5,5	10	50	D542 540 4911
1200	450 ex. Flange	24	5,5	10	55	D542 540 4912

Order key retipping: R 500 540 0 - - - continue with digits for diameter  
Other Diameters and lengths available on request!



Order number. Flange 0296 000 0111





## RM30 Premium Concrete

- Reinforced Concrete, strong reinforcement, granite, ductile cast iron pipes
- Order key: 1 1/4" = D540 310 ----; M41 = D543 310 ----

## RM65 Premium Concrete

- High-end Segment, good cutting performance, long life
- Reinforced concrete
- Order key: 1 1/4" = D540 560 ----; M41 = D543 560----

Ø (mm)	Length (mm)	Segment (mm)				Order key
		L	B	H	#	
25	450	16	3,0	10	3	--- 4025
32	450	16	3,0	10	4	--- 4032
35	450	16	3,0	10	4	--- 4035
42	450	16	3,0	10	5	--- 4042
45	450	24	3,5	10	4	--- 4045
52	450	24	3,5	10	5	--- 4052
56	450	24	3,5	10	5	--- 4056
62	450	24	3,5	10	6	--- 4062
66	450	24	3,5	10	6	--- 4066
72	450	24	3,5	10	6	--- 4072
76	450	24	3,5	10	7	--- 4076
82	450	24	3,5	10	7	--- 4082
87	450	24	3,5	10	8	--- 4087
92	450	24	3,5	10	8	--- 4092
102	450	24	3,5	10	9	--- 4102
108	450	24	4,0	10	9	--- 4108
112	450	24	4,0	10	9	--- 4112
122	450	24	4,0	10	10	--- 4122
125	450	24	4,0	10	10	--- 4125
127	450	24	4,0	10	10	--- 4127
132	450	24	4,0	10	10	--- 4132
142	450	24	4,0	10	11	--- 4142
152	450	24	4,0	10	12	--- 4152
158	450	24	4,0	10	12	--- 4158
162	450	24	4,0	10	12	--- 4162
172	450	24	4,0	10	13	--- 4172
182	450	24	4,0	10	13	--- 4182
186	450	24	4,0	10	13	--- 4186
200	450	24	4,0	10	14	--- 4200
212	450	24	4,0	10	15	--- 4212
218	450	24	4,0	10	15	--- 4218
225	450	24	4,0	10	15	--- 4225
250	450	24	4,0	10	15	--- 4250
270	450	24	4,5	10	16	--- 4270
300	450	24	4,5	10	18	--- 4300
320	450	24	4,5	10	19	--- 4320
350	450	24	4,5	10	20	--- 4350
400	450	24	4,5	10	22	--- 4400

Order key retipping: R 500 310 0 - - - continue with digits for diameter  
Other Diameters and lengths available on request!

## RM30 Premium Concrete

- Reinforced Concrete, strong reinforcement, granite, ductile cast iron pipes

Ø (mm)	Length (mm)	Segment (mm)				Order number
		L	B	H	#	
450	450 ex. Flange	24	4,5	10	23	D542 310 4450
500	450 ex. Flange	24	4,5	10	25	D542 310 4500
600	450 ex. Flange	24	4,5	10	28	D542 310 4600
700	450 ex. Flange	24	5,5	10	30	D542 310 4700
800	450 ex. Flange	24	5,5	10	35	D542 310 4800
900	450 ex. Flange	24	5,5	10	40	D542 310 4900
1000	450 ex. Flange	24	5,5	10	45	D542 310 41000
1100	450 ex. Flange	24	5,5	10	50	D542 310 41100
1200	450 ex. Flange	24	5,5	10	55	D542 310 41200

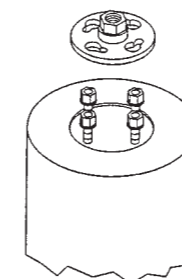
Order key retipping: R 500 310 0 - - - continue with digits for diameter  
Other Diameters and lengths available on request!

## RM65 Premium Beton

- High-end Segment, good cutting performance, long life
- Reinforced concrete

Ø (mm)	Length (mm)	Segment (mm)				Order number
		L	B	H	#	
450	450 ex. Flange	24	4,5	10	23	D542 560 4450
500	450 ex. Flange	24	4,5	10	25	D542 560 4500
600	450 ex. Flange	24	4,5	10	28	D542 560 4600
700	450 ex. Flange	24	5,5	10	30	D542 560 4700
800	450 ex. Flange	24	5,5	10	35	D542 560 4800
900	450 ex. Flange	24	5,5	10	40	D542 560 4900
1000	450 ex. Flange	24	5,5	10	45	D542 560 41000
1100	450 ex. Flange	24	5,5	10	50	D542 560 41100
1200	450 ex. Flange	24	5,5	10	55	D542 560 41200

Order key retipping: R 500 560 0 - - - continue with digits for diameter  
Other Diameters and lengths available on request!



Order number. Flange 0296 000 0111





## RGX50 Premium Concrete

- Good cutting performance through pattern diamond technology
- good life, for drill motors up to 3 kW
- Concrete, reinforced concrete



## RM40 Concrete Standard

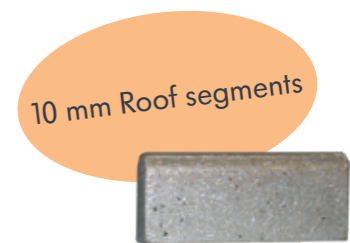
- Easy cutting, good life
- Concrete, reinforced concrete, brickwork

Ø (mm)	Length (mm)	Segment (mm)				Order number
		L	B	H	#	
52	450	24	3,5	10+2	5	---- 570 4052
56	450	24	3,5	10+2	5	---- 570 4056
62	450	24	3,5	10+2	6	---- 570 4062
66	450	24	3,5	10+2	6	---- 570 4066
72	450	24	3,5	10+2	6	---- 570 4072
76	450	24	3,5	10+2	7	---- 570 4076
82	450	24	3,5	10+2	7	---- 570 4082
87	450	24	3,5	10+2	8	---- 570 4087
92	450	24	3,5	10+2	8	---- 570 4092
102	450	24	3,5	10+2	9	---- 570 4102
108	450	24	4,0	10+2	9	---- 570 4108
112	450	24	4,0	10+2	9	---- 570 4112
122	450	24	4,0	10+2	10	---- 570 4122
125	450	24	4,0	10+2	10	---- 570 4125
127	450	24	4,0	10+2	10	---- 570 4127
132	450	24	4,0	10+2	10	---- 570 4132
142	450	24	4,0	10+2	11	---- 570 4142
152	450	24	4,0	10+2	12	---- 570 4152
158	450	24	4,0	10+2	12	---- 570 4158
162	450	24	4,0	10+2	12	---- 570 4162
172	450	24	4,0	10+2	13	---- 570 4172
182	450	24	4,0	10+2	13	---- 570 4182
186	450	24	4,0	10+2	13	---- 570 4186
200	450	24	4,0	10+2	14	---- 570 4200
212	450	24	4,0	10+2	15	---- 570 4212
218	450	24	4,0	10+2	15	---- 570 4218
225	450	24	4,0	10+2	15	---- 570 4225
250	450	24	4,0	10+2	15	---- 570 4250
270	450	24	4,5	10+2	16	---- 570 4270
300	450	24	4,5	10+2	18	---- 570 4300
350	450	24	4,5	10+2	20	---- 570 4350

Order key retipping: R 500 570 0 - - - continue with digits for diameter  
Other Diameters and lengths available on request!

Ø (mm)	Length (mm)	Segment (mm)				Order number
		L	B	H	#	
52	450	24	3,0	10	5	D543450 4052
56	450	24	3,0	10	5	D543450 4056
62	450	24	3,0	10	6	D543450 4062
66	450	24	3,0	10	6	D543450 4066
72	450	24	3,5	10	6	D543450 4072
76	450	24	3,5	10	7	D543450 4076
82	450	24	3,5	10	7	D543450 4082
87	450	24	3,5	10	8	D543450 4087
92	450	24	3,5	10	8	D543450 4092
102	450	24	3,5	10	9	D543450 4102
108	450	24	4,0	10	9	D543450 4108
112	450	24	4,0	10	9	D543450 4112
122	450	24	4,0	10	10	D543450 4122
125	450	24	4,0	10	10	D543450 4125
127	450	24	4,0	10	10	D543450 4127
132	450	24	4,0	10	10	D543450 4132
142	450	24	4,0	10	11	D543450 4142
152	450	24	4,0	10	12	D543450 4152
158	450	24	4,0	10	12	D543450 4158
162	450	24	4,0	10	12	D543450 4162
172	450	24	4,0	10	13	D543450 4172
182	450	24	4,0	10	13	D543450 4182
186	450	24	4,0	10	13	D543450 4186
200	450	24	4,0	10	14	D543450 4200
212	450	24	4,0	10	15	D543450 4212
218	450	24	4,0	10	15	D543450 4218
225	450	24	4,0	10	15	D543450 4225
250	450	24	4,0	10	15	D543450 4250
270	450	24	4,5	10	16	D543450 4270
300	450	24	4,5	10	18	D543450 4300
320	450	24	4,5	10	19	D543450 4320
350	450	24	4,5	10	20	D543450 4350
400	450	24	4,5	10	22	D543450 4400

Order key retipping: R 500 450 0 - - - continue with digits for diameter  
Other Diameters and lengths available on request!





## RM40 Concrete Standard

- Easy cutting, good life
- Concrete, reinforced concrete, brickwork

Ø (mm)	Length (mm)	Segment (mm)				Order number
		L	B	H	#	
25	400	16	3,0	10	3	D520 450 4025
32	400	16	3,0	10	4	D520 450 4032
35	400	16	3,0	10	4	D520 450 4035
42	400	16	3,0	10	5	D520 450 4042
45	400	24	3,5	10	4	D520 450 4045
52	400	24	3,5	10	5	D520 450 4052
56	400	24	3,5	10	5	D520 450 4056
62	400	24	3,5	10	6	D520 450 4062
66	400	24	3,5	10	6	D520 450 4066
72	400	24	3,5	10	6	D520 450 4072
76	400	24	3,5	10	7	D520 450 4076
82	400	24	3,5	10	7	D520 450 4082
87	400	24	3,5	10	8	D520 450 4087
92	400	24	3,5	10	8	D520 450 4092
102	400	24	3,5	10	9	D520 450 4102
112	400	24	4,0	10	9	D520 450 4112
122	400	24	4,0	10	10	D520 450 4122
127	400	24	4,0	10	10	D520 450 4127
132	400	24	4,0	10	10	D520 450 4132
142	400	24	4,0	10	11	D520 450 4142
152	400	24	4,0	10	12	D520 450 4152
162	400	24	4,0	10	12	D520 450 4162

Order key retipping: R 500 450 0 - - - continue with digits for diameter  
Other Diameters and lengths available on request!

## RM52 Premium Concrete

- Concrete, reinforced concrete, medium hard brickwork

Ø (mm)	Length (mm)	Segment (mm)				Order number
		L	B	H	#	
25	400	16	3,0	10	3	D520 540 4025
32	400	16	3,0	10	4	D520 540 4032
35	400	16	3,0	10	4	D520 540 4035
42	400	16	3,0	10	5	D520 540 4042
45	400	24	3,5	10	4	D520 540 4045
52	400	24	3,5	10	5	D520 540 4052
56	400	24	3,5	10	5	D520 540 4056
62	400	24	3,5	10	6	D520 540 4062
66	400	24	3,5	10	6	D520 540 4066
72	400	24	3,5	10	6	D520 540 4072
76	400	24	3,5	10	7	D520 540 4076
82	400	24	3,5	10	7	D520 540 4082
92	400	24	3,5	10	8	D520 540 4092
102	400	24	3,5	10	9	D520 540 4102
112	400	24	4,0	10	9	D520 540 4112
122	400	24	4,0	10	10	D520 540 4122
132	400	24	4,0	10	10	D520 540 4132
142	400	24	4,0	10	11	D520 540 4142
152	400	24	4,0	10	12	D520 540 4152

Order key retipping: R 500 540 0 - - - continue with digits for diameter  
Other Diameters and lengths available on request!





## RS75 Diamond Crown Bits Premium

- Concrete, reinforced concrete, brickwork

Ø (mm)	Length (mm)	Ringbreite (mm)	Order number
10	300	2,5	D520 501 3010
12	300	2,5	D520 501 3012
14	300	2,5	D520 501 3014
15	300	2,5	D520 501 3015
16	300	2,5	D520 501 3016
18	300	2,5	D520 501 3018
20	300	2,5	D520 501 3020
22	300	2,5	D520 501 3022
24	300	2,5	D520 501 3024
25	300	2,5	D520 501 3025
26	300	2,5	D520 501 3026
28	300	2,5	D520 501 3028
30	300	2,5	D520 501 3030
32	300	2,5	D520 501 3032
35	300	2,5	D520 501 3035
38	300	2,5	D520 501 3038
40	300	2,5	D520 501 3040
50	300	2,5	D520 501 3050

Other Diameters and lengths available on request!



## KN57 Premium Concrete

- Sewer Construction
- Concrete, reinforced concrete, brickwork

Ø (mm)	Length (mm)	Segment (mm)				Order number
		L	B	H	#	
112	300	24	4,0	7	9	D530 402 3112
127	300	24	4,0	7	10	D530 402 3127
138	300	24	4,0	7	11	D530 402 3138
152	300	24	4,0	7	12	D530 402 3152
162	300	24	4,0	7	12	D530 402 3162
167	300	24	4,0	7	12	D530 402 3167
172	300	24	4,0	7	13	D530 402 3172
182	300	24	4,0	7	13	D530 402 3182
186	300	24	4,0	7	13	D530 402 3186
200	300	24	4,0	7	14	D530 402 3200
212	300	24	4,0	7	15	D530 402 3212
226	300	24	4,0	7	15	D530 402 3226
232	300	24	4,0	7	15	D530 402 3232
257	300	24	4,0	7	15	D530 402 3257
297	300	24	4,5	7	18	D530 402 3297
354	300	24	4,5	7	20	D530 402 3354

Order key retipping: R 500 402 0 - - - continue with digits for diameter  
Other Diameters and lengths available on request!



Sewer Connection material	Size (mm)	Outer Drilling-Ø (mm)
PVC	100	112
PVC	125	127
PVC	150	162
PVC	200	200
Vitrified Clay	ST DN 150	172
Vitrified Clay	B DN 150	172
Vitrified Clay	B DN 200	232
Vitrified Clay	DN 150	200
Vitrified Clay	DN 200	257
Concrete	150	232
Concrete	225	330



## Ductile Cast Iron Pipes

### GS 30 Sewer Construction Cast

- Connection GÖLZ 3 hole flange
- Special type for ductile cast iron pipes



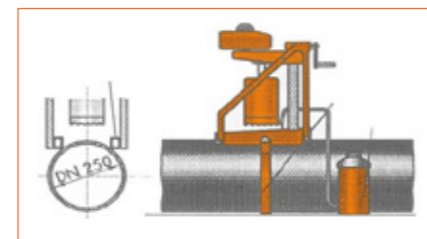
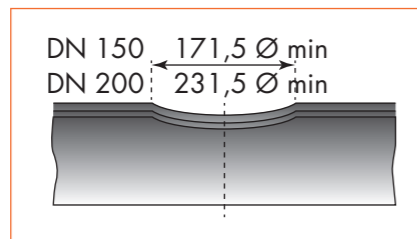
10 mm Roof segments



Ø (mm)	Length (mm)	Segment (mm)				Order number
		L	B	H	#	
173	175	24	4,0	10	14	D530 301 2173
233	200	24	4,0	10	17	D530 301 2233

Order key retipping: R 500 301 0 - - - continue with digits for diameter

Please follow the installation instructions of the pipe producer.



The minimum diameter of the hole may not be undercut.

DN 150 = Ø 171,5 mm

DN 200 = Ø 231,5 mm

The maximum diameter of the bore hole is:

DN 150 = Ø 173,5 mm

DN 200 = Ø 233,5 mm



## Diamond Drill Bits for Test Coring

### RM 40 Test Coring Concrete

- on powerful core drilling-machines
- Core sampling in concrete with light to medium reinforcement



10mm Roof segments

Ø (mm)	Length (mm)	Segment (mm)				Order number
		L	B	H	#	
108	400	24	4,0	10	9	D530 450 4108
158	400	24	4,0	10	12	D530 450 4158
208	400	24	4,0	10	14	D530 450 4208

Order key retipping: R 500 450 0 - - - continue with digits for diameter

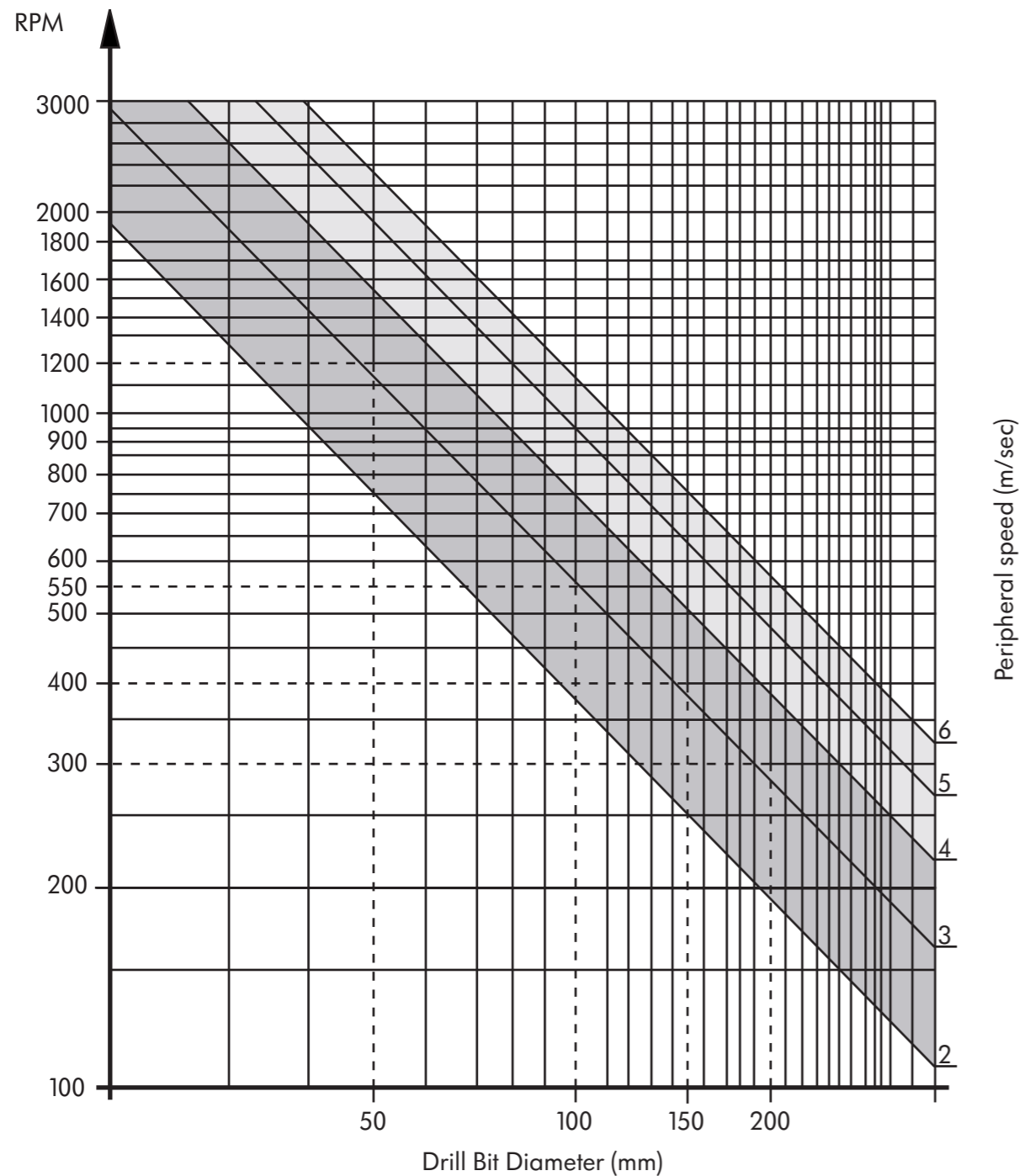
### KH 95 Test Coring Asphalt

- Connection GÖLZ 3 hole Flange
- For powerful core drilling machines
- Core sampling in asphalt

Ø (mm)	Length (mm)	Segment (mm)				Order number
		L	B	H	#	
108	400	24	4,0	7	9	D530 800 4108
158	400	24	4,0	7	12	D530 800 4158
208	400	24	4,0	7	14	D530 800 4208

Order key retipping: R 500 800 0 - - - continue with digits for diameter





**Best drilling performance:**  
 in concrete and reinforced concrete: 2-4 m/sec  
 in abrasive material (sandstone/asphalt): 4-6 m/sec

Recommended coolant flow	
Ø (mm)	l/min
20 - 30	approx. 0,5 - 1,0
40 - 52	approx. 1,0 - 2,0
62 - 82	approx. 2,0 - 3,0
92 - 162	approx. 3,0 - 4,0
172 - 250	approx. 4,0 - 5,0
300 - 350	approx. 6,0 - 8,0
400 - 500	approx. 8,0 - 10,0



## RM40 Concrete Standard

- Easy cutting, good life
- Concrete, reinforced concrete, brickwork

Drilling Range (mm)	Segment (mm)			Order number
	L	W	H	
25	16	3,0	10	0496 101 3025
32 - 42	16	3,0	10	0496 101 3035
42 - 56	24	3,5	10	0496 101 3052
62 - 72	24	3,5	10	0496 101 3067
76 - 92	24	3,5	10	0496 101 3087
92 - 112	24	3,5	10	0496 101 3101
92 - 112	24	4,0	10	0496 101 3102
122 - 172	24	4,0	10	0496 101 3140
182 - 250	24	4,0	10	0496 101 3210
260 - 600	24	4,5	10	0496 101 3264

## RM30

- 10 mm High-end segment
- Heavy reinforced concrete, granite, ductile cast pipes, steel

## RM52

- 10 mm High-end segment
- concrete, reinforced concrete, middle-hard brickwork

## RM65

- 10 mm High-end segment
- reinforced concrete-flint

Drilling Range (mm)	Segment (mm)			RM30	RM52	RM65
	L	W	H	Order number	Order number	Order number
25	16	3,0	10	0496 101 2025	0496 101 4025	0496 101 6025
32 - 42	16	3,0	10	0496 101 2035	0496 101 4035	0496 101 6035
42 - 56	24	3,5	10	0496 101 2052	0496 101 4052	0496 101 6052
62 - 72	24	3,5	10	0496 101 2067	0496 101 4067	0496 101 6067
76 - 92	24	3,5	10	0496 101 2087	0496 101 4087	0496 101 6087
92 - 112	24	3,5	10	0496 101 2101	0496 101 4101	0496 101 6101
92 - 112	24	4,0	10	0496 101 2102	0496 101 4102	0496 101 6102
122 - 172	24	4,0	10	0496 101 2140	0496 101 4140	0496 101 6140
182 - 250	24	4,0	10	0496 101 2210	0496 101 4210	0496 101 6210
260 - 600	24	4,5	10	0496 101 2264	0496 101 4264	0496 101 6264
500 - 1200	24	5,5	10	0496 101 2265	0496 101 4265	0496 101 6265



## Optimal performance by systematic diamond arrangement



### RGX25

- good life, Roof segments allow an easier cut
- high working speed, for drill motors up to 3 kW
- Concrete, reinforced concrete



Drilling Range (mm)	Segment (mm)			Order number
	L	W	H	
45 - 56	24	3,5	10	0496 100 9052
62 - 72	24	3,5	10	0496 100 9067
76 - 92	24	3,5	10	0496 100 9087
92 - 112	24	3,5	10	0496 100 9101
92 - 112	24	4,0	10	0496 100 9102
122 - 172	24	4,0	10	0496 100 9140
182 - 250	24	4,0	10	0496 100 9210



### RGX50

- good life, Roof segments allow an easier cut
- high working speed, for drill motors from 3 kW
- Concrete, reinforced concrete



Drilling Range (mm)	Segment (mm)			Order number
	L	W	H	
42 - 56	24	3,5	10+2	0496 101 0052
62 - 72	24	3,5	10+2	0496 101 0067
76 - 92	24	3,5	10+2	0496 101 0087
92 - 112	24	3,5	10+2	0496 101 0101
92 - 112	24	4,0	10+2	0496 101 0102
122 - 172	24	4,0	10+2	0496 101 0140
182 - 250	24	4,0	10+2	0496 101 0210
206 - 600	24	4,5	10+2	0496 101 0264
260 - 600	24	5,0	10+2	0496 101 0265
600 - 1200	24	5,5	10+2	0496 101 0600

### RS75 Crown segment - Premium

- Reinforced Concrete, medium brickwork



Drilling Range (mm)	Segment (mm)			Order number
	L	W	H	
10		2,5	7	0296 100 0810
12		2,5	7	0296 100 0812
14		2,5	7	0296 100 0814
15		2,5	7	0296 100 0815
16		2,5	7	0296 100 0816
18		2,5	7	0296 100 0818
20		2,5	7	0296 100 0820
22		2,5	7	0296 100 0822
24		2,5	7	0296 100 0824
25		2,5	7	0296 100 0825
26		2,5	7	0296 100 0826
28		2,5	7	0296 100 0828
30		2,5	7	0296 100 0830
32		2,5	7	0296 100 0832
35		2,5	7	0296 100 0835
36		2,5	7	0296 100 0836
38		2,5	7	0296 100 0838
40		2,5	7	0296 100 0840
50		2,5	7	0296 100 0850



Adapters		Order number
GÖLZ 3-hole-Flange	Outer thread 1 1/4" UNC	0296 000 0001
Inner thread 1 1/4" UNC	GÖLZ 3-hole-Flange	0296 000 0011
Inner thread 1 1/4" UNC	Inner thread R 1/2"	0296 000 0014
Inner thread 1 1/4" UNC	4 hole bayonet flange	0296 000 0111
Outer thread R 1/2"	Outer thread 1 1/4" UNC	0296 000 0029
M41	Polygon PQ6, inner	0296 000 0148
Machine Polygon PQ6	Outer thread 1 1/4" UNC	0296 000 0149
Inner thread 1 1/4" UNC	Drill Bit Polygon PQ6, outer	0296 000 0150

Drill Extentions, Connection 1 1/4" UNC (suitable as of Ø 52 mm)		
Name	Length (mm)	Order number
1 1/4" UNC threaded	100	0296 000 0041
1 1/4" UNC threaded	200	0296 000 0042
1 1/4" UNC threaded	300	0296 000 0043
1 1/4" UNC threaded	400	0296 000 0044
1 1/4" UNC threaded	500	0296 000 0045



Drill Extentions, Connection R 1/2" (suitable as of Ø 32 mm)		
Name	Length (mm)	Order number
R 1/2" threaded	100	0296 000 0061
R 1/2" threaded	200	0296 000 0062
R 1/2" threaded	300	0296 000 0063



Drill Extentions, Connection GÖLZ 3 hole flange (suitable as of Ø 112 mm)		
Name	Length (mm)	Order number
GÖLZ 3-hole-Flange	100	0296 000 0051
GÖLZ 3-hole-Flange	200	0296 000 0052
GÖLZ 3-hole-Flange	300	0296 000 0053
GÖLZ 3-hole-Flange	400	0296 000 0054




Drill Extentions, Connection GÖLZ 4 hole flange (suitable as of Ø 270 mm)		
Name	Length (mm)	Order number
4 hole bayonet flange	300	0296 000 0055
4 hole bayonet flange	500	0296 000 0056

Brazing and re-tipping equipment		Order number
Soldering Magnet, excess 0,50/1,25mm		0267 110 0036
Soldering Magnet, excess 0,75/1,00mm		0267 110 0037
Soldering Magnet, excess 1,50 mm		0267 110 0040
Four Step Magnet (0,5 / 0,75 / 1,00 / 1,25 mm)		0267 110 0041
special silver solder Ø 1,5 mm		0267 110 0035
Flux 0,1 kg Filling		0298 000 0978





Diamond Wire 10,5 - 11 mm, for wire saws			
Type Order no.	Ø (mm)	Bits per m	Information
DS 100	11,0	40	Standard wire for concrete and reinforced concrete, rubberized, with spring, very good cutting
DS 100GX	10,5	40	 Premium Wire for concrete and reinforced concrete good life
DS 140	10,5	40	galvanized wire for cutting steel
DS 148	10,5	40	Premium Wire for very high reinforced concrete

Diamond Wire 8,8 mm, for wire saws from 3,3 kW			
Type Order no.	Ø (mm)	Bits per m	Information
DS 88	8,8	40	Thin high-speed wire in concrete, reinforced concrete and brickwork. Specially for small wire saws

Information	Order number
joint locking GV 11	0283 100 5504
Bold for joint locking	0283 100 5503
Steel straight coupler PH11	0283 100 5529
Steel straight coupler PH8	0283 100 5530
Screw connectors 8 mm / 3,8 mm	0283 100 5532
Pressing Ting Hydr. 8t incl. spare jaw to pressing tong MK9-50	0283 100 0330
spare jaw to pressing tong MK9-50	0283 100 0337
spare jaw to pressing tong MK7-50	0283 100 0335



## 1. General Information

The following terms and conditions shall apply to all our supplies relating to business with the ordering party. Any other terms and conditions shall only be binding for us if and when we have accepted them in writing. Delivery by us shall not mean approval. Oral declarations given by our representatives or staff shall require our written confirmation.

## 2. Offers

Our offers shall be subject to change. Orders shall not be deemed accepted until we have acknowledged them in writing. The acknowledgement shall be relevant to the contents of the contract for delivery.

## 3. Prices

The ordering party shall have to pay the price valid on the day of the delivery. Our prices shall be in euros (€) ex works excluding value added tax, customs duty, freight, shipping package, insurance, etc... These costs shall be for the account of the ordering party even if they are not shown in the invoice.

## 4. Packaging

The nature of the shipping package shall be specified by GÖLZ GmbH according to its appropriate application. The shipping package shall be invoiced at cost price.

## 5. Shipment

Shipment shall always be carried out upon invoice at the risk of the ordering party unless a different agreement has been made in writing. Unless something else has been agreed upon in writing, the means of transport and the route of transport shall be specified by us without being responsible for choosing the quickest and the cheapest alternative. Special requests on the part of the ordering party (for example an accelerated mode of shipment, special packing, commissioning of a special forwarding agent) shall be taken into account as far as possible, extra costs which might accrue shall be charged.

The risk shall pass to the ordering party at the time the delivery item leaves our plant, also if partial deliveries are made or the supplier has taken on further services, e.g. costs of shipment or delivery. To the extent that acceptance is required it shall be relevant to the passing of risk. Acceptance shall be effected promptly at the date of acceptance or, alternatively, after the supplier has given notice of readiness for acceptance.

The ordering party may not refuse acceptance in case of a minor defect.

## 6. Delivery

Agreed delivery times shall not be strictly binding but only approximately binding. However, they shall be indicated at adequate discretion. The date of delivery is observed as soon as the goods have left our plant or notice of readiness for shipment has been given. Observance of the delivery time shall be subject to correct and timely delivery by our suppliers. If shipment and/or acceptance are delayed for reasons the ordering party shall be responsible for, the resulting costs shall be invoiced to the ordering party.

In the case that non-observance of the delivery period is due to events beyond our control such as natural disaster, war, riot, force majeure, shortage of energy or labour disputes at our plant or at our suppliers' plant, the delivery time shall be extended by the period of these events. Should these circumstances last longer than three months, each contracting party shall be entitled to rescind the contract for delivery.

On demand of the ordering party we shall have to declare whether we rescind the contract or whether we are going to deliver within a reasonable period of time specified by us. In case of slight negligence claims for damages due to delayed delivery shall be excluded.

## 7. Warranty

With respect to defects of quality and defects of title the supplier shall provide warranty as follows – subject to the provisions of paragraph 8 – , any other claims shall be excluded.

### Defects of quality

a All parts that turn out to be defective due to a circumstance that occurred before the risk has passed shall have, at the option of the supplier, to be improved or replaced. If such defects are identified, the supplier shall have to be immediately notified in writing. Replaced parts shall become the property of the supplier.

b The ordering party shall have, after consultation with the supplier, to give the supplier the necessary time and opportunity to carry out all improvements and to make all substitute deliveries which he considers necessary; otherwise the supplier shall be released from liability for the resulting consequences. Only in urgent cases where the operational safety is put at risk and/or disproportionately high damage has to be prevented, the ordering party shall be entitled to repair the defect itself or to have the defect repaired by means of third parties and to require reimbursement from the supplier for the necessary expenses.

c Regarding the costs incurred for improvement and/or substitute delivery the supplier shall bear – as far as the complaint turns out to be justified – the costs of the substitute item including costs of shipment as well as the reasonable costs for removal and assembly, in addition, if, according to the situation of the individual case, this can fairly be required, the costs for the provision of the supplier's mechanics and back staff if necessary.

d The ordering party shall, within the limits of the statutory provisions, be entitled to rescind the contract for delivery if – taking in account the statutory exemptions – the period granted to the supplier for improvement or substitute delivery on grounds of a defect of quality has fruitlessly expired. In case of a minor defect the ordering party may only demand a price reduction. In all other cases the right to a reduction in price shall be excluded.

e Warranty shall, in particular, not be given in the following cases:

Inadequate or improper use, faulty assembly and/or faulty putting into operation by the ordering party or third parties, natural wear and tear, incorrect or negligent treatment, improper maintenance, inappropriate production facilities, chemical, electrochemical or electrical impacts – unless the supplier is responsible.

f In case of improper improvement by the ordering party or a third party the supplier shall not be liable for resulting consequences. The same shall apply to modifications of the delivery item made without the prior consent of the supplier.

### Defects of title

g If by using the delivery item industrial property rights are infringed in the home country, the supplier shall, in principle, provide the ordering party, at his own expense, with the right to continue using the delivered item or modify the delivery item in a way that it is reasonable for the ordering party and ensures that such infringement of industrial property rights no longer exists.

If this is not feasible on commercially reasonable terms or within a reasonable period of time, the ordering party shall be entitled to rescind the contract. The supplier shall also be entitled to rescind the contract subject to the same requirements.

In addition, the supplier shall release the ordering party from undisputed claims or claims that have become legally binding raised by the respective holders of these industrial property rights.

h The obligations of the supplier set forth in paragraph 7 g shall be exhaustive subject to the provisions of paragraph 8 b in case of infringement of property rights and copyrights. They shall apply only if

- the ordering party immediately informs the supplier of property rights or copyrights asserted,
- the ordering party supports the supplier to a reasonable extent in defending himself against claims and/or enables the supplier to carry out modifications measures as defined in paragraph 7g, the supplier is reserved the right to carry out all defensive measures including out-of-court settlements,

- the defect of title is not due to an instruction of the ordering party,
- the infringement was not caused by single-handed modifications of the delivery item by the ordering party or use of the delivery item in a way that is not in compliance with the contract.

## 8. Liability, Statute of Limitation

a If the delivery item cannot be used by the ordering party as specified in the contract due to fault on the part of the supplier caused by failure to implement proposals and consultations or by improper implementation of proposals and consultations which were made prior to or after conclusion of the contract or by violation of other ancillary contractual obligations, in particular instructions on operation and maintenance of the delivery item, the provisions of paragraph 7 and paragraph 8 b shall apply accordingly and any further claims of the ordering party shall be excluded.

b The supplier shall be liable, on whatsoever legal grounds, for damage which was not caused to the delivery item itself only in case of

- wilful intent
- gross negligence of the owner/ the corporate bodies or executive staff
- culpable injury to life and limb
- malicious withholding of information about defects or in case of defects the absence of which was warranted
- defects of the delivery item to the extent liability for physical injuries or damage to privately used property exists according to the German Product Liability Act.

In case of culpable infringement of essential contractual obligations, the supplier shall also be liable in case of gross negligence on the part of non-executive staff as well as in case of slight negligence, in the latter case limited to the damage typical for this type of contract and that can be reasonably foreseen.

Any further claims shall be excluded.

## 9. Statute of Limitation

All claims of the ordering party – on whatsoever legal grounds – shall become statute-barred in twelve months. In case of wilful intent or malicious action as well as in case of claims according to the German Product Liability Act the according time limits shall apply.

## 10. Retention of title

Goods supplied by us shall remain our property until the ordering party has paid all claims we have against the ordering party. Bills of exchange and cheques shall only be considered as means of payment after having been collected.

The supplier shall be entitled to insure the delivery item at the expense of the ordering party against theft, breakage, fire, water as well as against other damages unless the ordering party has demonstrably effected a policy of insurance itself.

The ordering party shall have the right to sell the delivery item on which we have reserved the property rights within orderly business relations unless the ordering party is in delay of payment or has ceased payment. The ordering party shall not be entitled to pledge the delivery item or to assign it as security. Pledges of the delivery item shall have immediately to be communicated to us with the bailiff's return enclosed (copy).

If any claims against third parties already exist with respect to the damage or the loss of the not yet completely paid delivery item the ordering party undertakes now to cede to us its pecuniary claim resulting from these claims. If the ordering party sells the delivery item, it undertakes now to cede to us – in view of the settlement of all our claims– the rights as well as all ancillary rights and all securities it is entitled to against buyers regarding this sale.

If the claims of the ordering party concerning the resale of our goods which are under reserve are taken into a current account, the ordering party undertakes now to cede to us its pecuniary claim to the amount of the respective and accepted balance, namely to the amount of our claims against the ordering party. At any rate the ordering party shall assure to cooperate in order to obtain official licenses or to cooperate concerning any other formalities in case they become necessary. The ordering party shall have the right to recover the claims ceded to us unless the ordering party is in delay of payment or has ceased payment.

If the value of securities granted to us exceeds our claims against the ordering party by more than 20%, we shall be obligated to release on demand of the ordering party.

If, when the ordering party delivers (the goods under reserve) abroad, any measures specified by us are to be taken in the country of importation in order to guarantee the effectiveness of the retention of title aforementioned under this paragraph or of the comparable rights that rule in that country of importation, these measures shall be taken at the expense of the ordering party.

If the law of the country of importation does not allow a retention of title, but allows the seller to reserve other rights relative to the delivery item, we shall be entitled to exercise all rights of this nature. Unless our claims against the ordering party can be secured in equal measure, the ordering party shall be obligated to provide us with other securities at its own expense.

If the ordering party acts in a way contrary to contract, in particular in case of delay of payment, the supplier shall be entitled to take the delivery item back after he has sent a reminder and the ordering party shall be obligated to return the item. The assertion of retention of title as well as the taking back or the pledge of the delivery item by the supplier shall not be regarded as withdrawal from the contract. Filing for bankruptcy shall entitle the supplier to withdraw from the contract and to require the immediate return of the delivery item.

## 11. Terms of payment

Our invoices are payable strictly net 30 days from date of invoice or with 3 % cash discount within 10 days from date of invoice unless different agreements have been made in writing. Payments are always set off against the oldest invoice outstanding. The ordering party shall only be entitled to set off against claims which are uncontested or which have become legally binding. Other payments shall have to be made free of charges for us. Bank charges, discount charges and collection charges shall be borne by the ordering party even without explicit agreement. Payments by note require previous agreement. If the time for payment is exceeded, we shall be entitled, even without sending a reminder, to charge interest starting from that time amounting to 8% above the respective basic interest rate of the German Federal Bank, but at least 12% per annum. This interest rate shall have to be assessed higher or lower if the ordering party proves to be charged with a higher interest rate or if we prove to be charged with a higher interest rate.

At any rate, we shall be entitled to require at least the legal interest rate. If the financial circumstances of the ordering party degrade considerably after placing the order or if we learn only after the placing of order about a degradation of the financial circumstances of the ordering party that has set in before placing the order, we shall be entitled to require either payment in advance or provision of a security of our own option. Payment may only be made to us or to persons who have expressly been legitimated in writing or by power to collect. We reserve the right to process orders amounting to less than 50.00 EUROS as well as orders placed by parties unknown to us cash on delivery.

## 12. Place of fulfilment and place of jurisdiction

Place of fulfilment for deliveries and services shall be the domicile of our headquarters. Place of jurisdiction shall be Hellenenthal.

For all business relations between the ordering party and us German Law shall apply, except however the provisions of the Uniform Law on the International Sale of Goods and the UN Convention on Contracts for the International Sale of Goods.

As far as allowed by law, Schleiden shall be agreed upon to be the exclusive place of jurisdiction for all disputes arising, also arising from disputes regarding bills of exchange or cheques. We also reserve the right to institute legal proceedings at the domicile of the ordering party.



**GÖLZ® - Group**

**GÖLZ GmbH**

**Dommersbach 51 | 53940 Hellenthal**

**Telefon +49 2482 12-0 | Fax +49 2482 12-222**

**info@goelz.de | www.goelz.de**

**ÖSTERREICH**

**Gözl Ges.m.b.H.**

**Samstr. 52 | A-5020 Salzburg**

**Telefon +43 662 438175 | Fax +43 662 430734**

**info@goelz.at | www.goelz.at**

**FRANKREICH**

**Gözl S.A.S.**

**1, rue de la Mairie | F-67370 Berstett**

**Telefon +33 3 88 59 43 00 | Fax +33 3 88 59 47 77**

**info@golz.fr | www.golz.fr**

**GROSSBRITANNIEN**

**Golz (UK) Ltd.**

**Unit A5 | Springhead, Enterprise Park**

**Northfleet | Kent DA 11 8HB**

**Telefon +44 1 474 321 679 | Fax +44 1 474 321 477**

**info@goelz.co.uk | www.golzuk.com**

**BENELUX**

**Gözl Benelux N.V. Belgien**

**Eupener Straße 61 | B-4731 Raeren-Eynatten**

**Telefon +32 87 55 23 49 | Fax +32 13 78 33 28**

**benelux@goelz.de | www.golzgroup.com**

**USA**

**Golz L.L.C.**

**5860 East Osage Ridge Lane | Columbia MO 65203-6018**

**info@golzusa.com | www.golzgroup.com**

**Member of**



**Your GÖLZ dealer:**

